

Miner PTO General Meeting

September 12, 2023

Welcome to the first PTO General Meeting of the 2023-24 school year! Did you know that you can add all PTO meetings (and any Miner event) to your phone's calendar? Follow the instructions on our [home page](#) to sync your calendar with Miner's so you can always know what's going on!

Agenda

6:00 - 6:05 Welcome & Introductions

6:05 - 6:15 Principal's Report

6:15 - 6:20 Community School Update

6:20 - 6:25 School Safety & Building Updates

Regular PTO Business

6:25 - 6:45 PTO President & VP Report

6:45 - 6:50 Treasurer's Report

6:50 - 6:55 Teacher Representatives' Report

6:55 - 7:00 Upcoming Events, Reminders, Opportunities

Open Comment: Other joys, concerns, or questions?



Welcome!

- Welcome to our first PTO General Meeting of the year!
- Babysitting is in the Library with our friends from Christ City Church (they also provide dinner). Huge thanks to Matthew Watson and his amazing team of volunteers.
- Pizza is available for you all; if you have a couple of dollars to put in the donation bucket we would appreciate it.
- Next PTO meeting date: Tuesday, October 3, at 6:00pm.
- What are your thoughts on meetings: in-person or a hybrid meeting with a virtual option too?
- Reading and approval of the [June 2023 meeting minutes](#).



Introduction of PTO Executive Board

- President - Brandon Scott (3rd Grade Parent)
- Vice President - Abby McGill (2nd Grade Parent)
- Treasurer - Nicholas Heitger (5th, 2nd, K Parent)
- Secretary - Julie Muir (4th, 2nd, PK4 Parent)
- Teacher Representatives-
 - Ms. Kyra Hayes (ELA Coach)
 - Ms. Trilby Hillenbrand (STEM Teacher)
 - Mr. Jason Yoho (Kindergarten Teacher)
- Principal - Mr. Lawrence Dance



Principal's Report

Principal Dance

Lawrence.Dance2@k12.dc.gov



Community School Update

Ms. ShaLisa Richardson

srichardson@ebfsc.org

<https://www.minerelementary.org/community-school.html>



Community School Update



**EDGEWOOD/
BROOKLAND**
FAMILY SUPPORT COLLABORATIVE



Miner PTO General Meeting - September 12, 2023

Miner is proud to be a Community School!

Since the 2018-19 School Year, Miner has partnered with the [Edgewood/Brookland Family Support Collaborative](#) to implement the Community School Model at Miner.

What is a Community School?

A community school is both a place and a set of partnerships between the school and other community resources. Its integrated focus on health and academics, youth and community development and community engagement leads to improved student learning, stronger families and healthier communities. Schools become centers of the community and are open to everyone-all day, every day, evenings and weekends. [Click here to learn about the OSSE Community School Initiative.](#)

Community School Update

Feedback Form

Your name (optional) ?

Your email address (optional) ?

** Indicates required field*

Your Questions, Comments, or Suggestions *

SUBMIT



THE SALVATION ARMY
NATIONAL CAPITAL AREA COMMAND

2023 ANGEL TREE REGISTRATION WASHINGTON, DC

The Angel Tree program is designed to help qualifying families living in Washington, DC, receive Christmas assistance in 2023 through donor given gifts for their children.

*Wish list items are NOT guaranteed.

IN-PERSON REGISTRATION

September 6th - September 15th, 2023*
2300 Martin Luther King Jr. Ave SE (Morris Rd. entrance)

September 19th - September 29th, 2023*
3335 Sherman Ave NW (Morton St entrance)

*Registration will be from 9am-3pm.
Line starts at 9am. No early arrivals.

ONLINE REGISTRATION

September 2nd - September 4th, 2023
Register at: <https://www.saangeltree.org/>
or scan the following QR code:



The following documents are required for registration:

- Picture ID (proof of DC residency)
- Birth Certificates for all children, birth to 12 years old.
- Proof of income (60 days)
- Proof of DC residency (current lease or rent receipt)
 - If you are not the lease holder, please bring/upload (under "proof of residency") a letter stating that you and your children live there and pay \$X amount for rent. You also must have other mailed documents (i.e: proof of income, pay stub, W2, school enrollment verification, etc.) at that address.
 - If you are residing at a shelter you must bring/upload (under "proof of residency") a letter from the shelter stating that you and your child reside there.



School Safety & Building Updates

Mr. Tildon Copeland,
Manager, Strategy & Logistics
Tildon.Copeland@k12.dc.gov





School Safety

MSL Copeland



Safety

Drills

Emergency Response
Team

Communications

Offsite Reconciliation

Drills

- Schools have a duty to take care of their students, staff, and faculty. Most schools are very safe places—but for those unthinkable emergency instances, schools need to have a plan to respond.
- Emergency preparedness drills will play a pivotal role in saving lives in a critical incident.





Emergency Response

Emergency Response

- Staff are trained to be stakeholders in an emergency situation. This is for incidents at the school as well as to support incidents where the school will be needed to support. Key school staff member may be required to remain on campus to assist when an emergency situation arises.
 - Executive Support Team
 - Principal/Facility Director
 - Teachers
 - Counselors, Social Workers, and Psychologists
 - School Nurses
 - Custodians
 - School Secretary
 - Food Service/Cafeteria Workers
 - Bus Drivers (when applicable)





School Communications

Communications

DCPS Comms

Division of Communications from the school. The Chancellors offices

Principal Dance

School contact responder. In case of emergency, the principal will respond to the school community through Aspen and Blackboard

Assistant Principal Combs

Alternate contact responder in absences of principal

MSL Copeland

Alternate contact responder in absence of principal. Responder to in school networks such as Remind and email.

Offsite Reconciliation

Operational Coordination

- How do we coordinate the transition from response to short-term recovery efforts?

On-Scene Security, Protection, and Law Enforcement

- What plans or procedures are in place to manage and secure the scene following the incident?
- What is our process for tracking the status and location of individuals who need services? How do we ensure everyone gets home safe?

Administrator Point-of- Contacts

9/3/20XX

Principal Dance	AP Combs	MSL Copeland
<ul style="list-style-type: none"> • ALT • Behavior (Faison/ Kirby) • ECE • ILT • K-5 Math & Science • Leave Request • Parent Bulletin • Paraprofessionals • SPED & Related Services • SPED Collaboration Meetings • Staff Bulletin • Testing 	<ul style="list-style-type: none"> • K-5 ELA & SS • School-Wide Calendar • Committees • Coverage • Child Wellness Team • DC Reading Clinic • Grade-Level Meetings • Master Schedule • Surveys (Panorama & Insight) • Special Subjects • Teacher Mentors • ESOL • MTSS 	<ul style="list-style-type: none"> • Aftercare & Afterschool Programs • Attendance • Cafeteria • Custodians/ Maintenance • Emergency Response • Facilities • Field Trips • Front Office • Furniture Request • Grandparent Program • Substitute • School Events

Questions





School Growth Updates

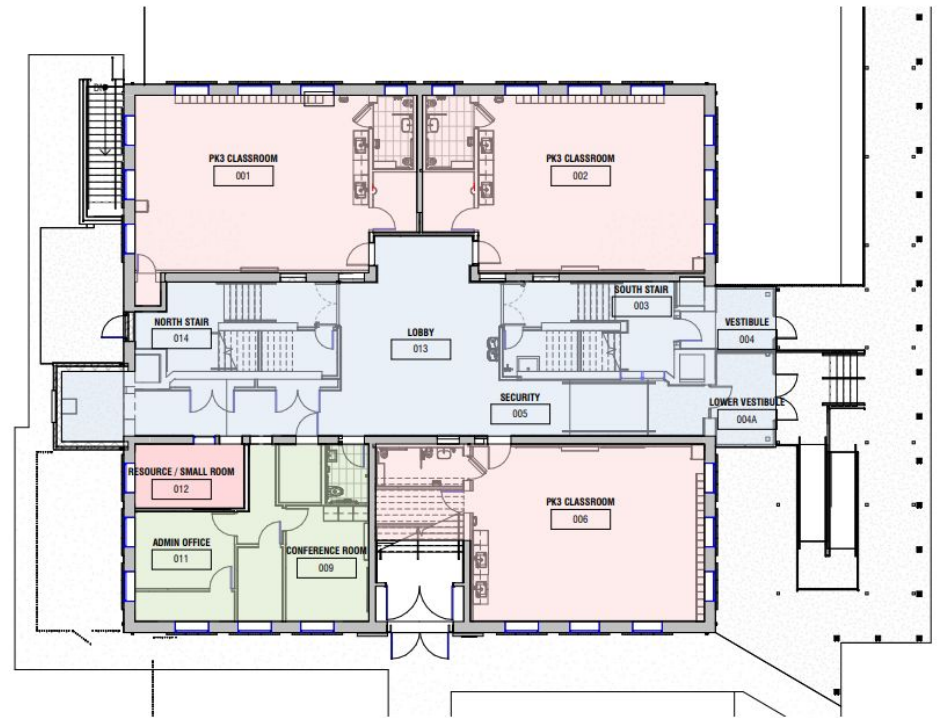
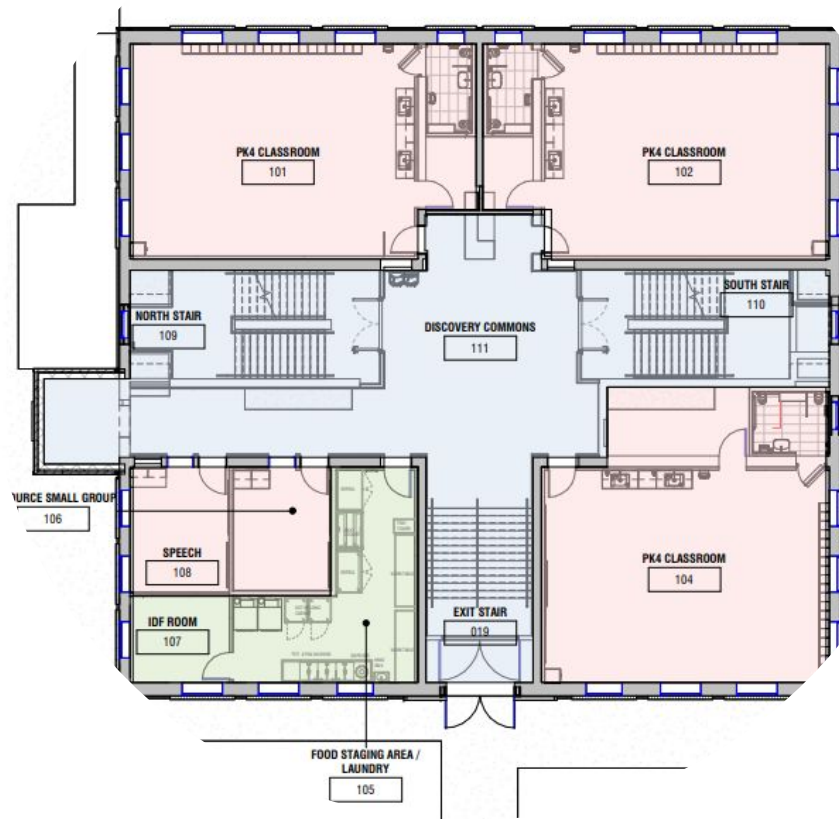
MSL Copeland



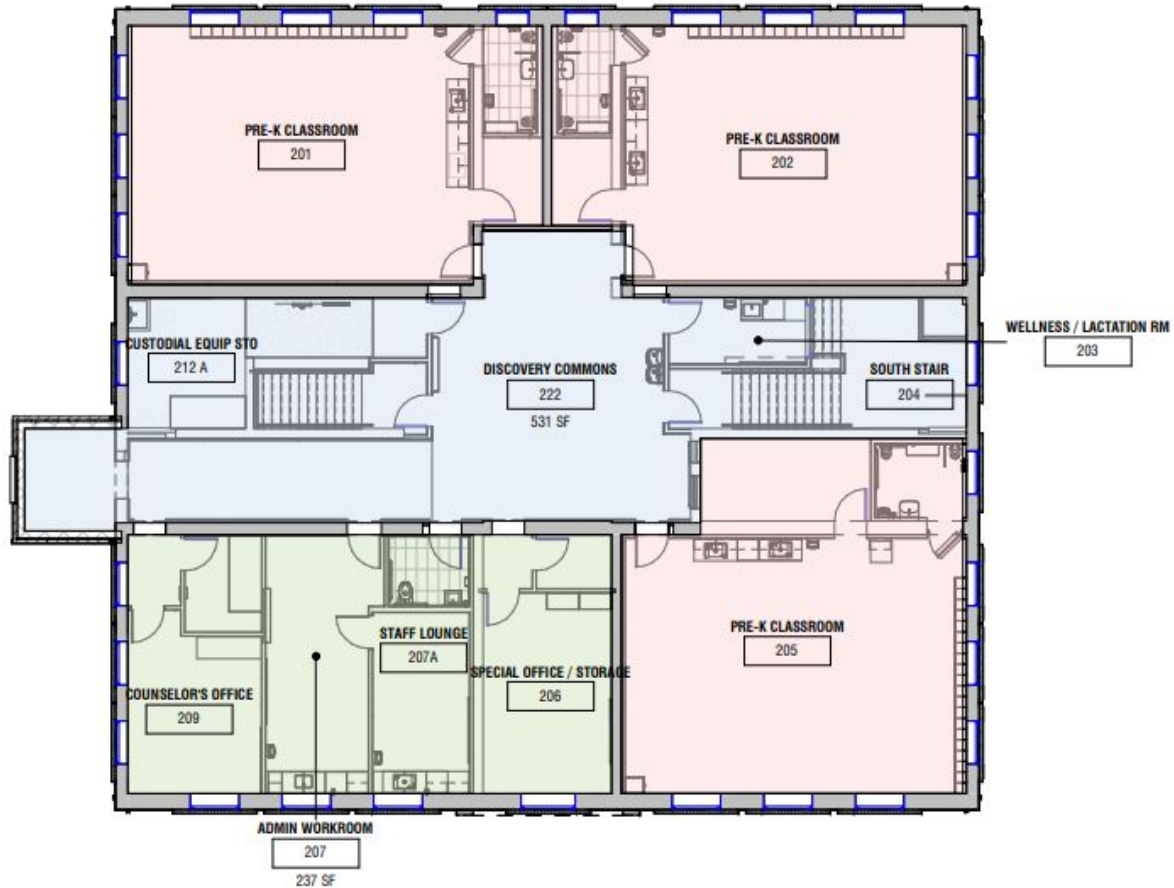
Old Miner Project

- Project status
 - On scope
 - 3 week work plans sent by CCC
 - SIT (School improvement Team)
- School opening 24-25 SY
- 9 Classroom ECE Program
- Current Space Utilization





LOWER LEVEL



2ND FLOOR

Regular PTO Business

minerpto@gmail.com

<https://www.minerelementary.org/parent-teacher-organization.html>



President & VP Reports

- What We Do
- How You Can Help
- How to Connect
- School Committees
- Upcoming Events:
 - Mighty Miner Happy Hour!
 - Walk to School Day!
- Support the Spirit Store!



What We Do

The purpose of the Miner PTO is to enhance and support the educational experience at Miner, to develop a closer connection between school and home by encouraging family and teacher involvement, and to improve the environment at Miner through volunteer and financial support.

- **We hold events** to engage our community (small events like next week's monthly Happy Hour or big ones like Trunk-or-Treat next month).
- **We support our staff and students** with funding for classroom grants, technology, field trips, etc.
- **We recognize the hard work** of our teachers and staff with appreciation meals, gifts, etc. throughout the year.
- **We communicate** with our Community, whether via email, weekly newsletter, social media, or at monthly meetings. All meeting agendas, presentations, and minutes are saved on the Miner website, which we maintain.
- **We work with other groups** in our school and our Community to ensure that Miner's voice is heard and that we hear everyone else's as well. We testify on behalf of Miner at ANC and DC Council Meetings. We work hard to advocate for all Miner students and staff.
- **We raise money** through our Bear Paw Fund and Holiday Greenery Sale, plus we write grant applications to secure additional funding for all sorts of things ranging from garden needs to sports equipment.

But we can't do this without you. As parents, guardians, caregivers, teachers, and staff members, you are automatically part of the PTO. We don't charge dues because we believe everyone should have a voice. But we do need help. How can you help?



Be a PTO Volunteer!

We are always looking for volunteers. We need help at a variety of levels. Whether you may be able to help at one event or you want to Chair a Committee, please fill out the [volunteer form](#)! If you're interested in joining a specific Committee, look no further.

PTO Committees (details on next slide):

- Appreciation & Recognition
- Communications
- Community Engagement
- Family Engagement & Events
- Fundraising & Grants

Please visit

<https://www.minerelementary.org/parent-teacher-organization.html> to learn about the role of each Committee.

Contact minerpto@gmail.com if you would like to join or even lead one of our PTO Committees!



PTO Committees

- **Appreciation & Recognition** - this Committee focuses on staff appreciation, including hosting lunches/breakfasts, organizing appreciation events, and more. *Chair: Simona Westlund*
- **Communications** - this Committee runs our social media, the website, and more to make sure everyone knows what's going on. *Chair: John Muir*
- **Community Engagement** - this Committee works with other organizations, whether in the school (such as the Mutual Aid Network) or in the Community (such as the Ward 7 Education Council) to ensure Miner is represented and supported throughout our Community. *Chair: Julie Muir*
- **Family Engagement & Events** - this Committee keeps our families engaged by planning fun events like Trunk-or-Treat and the Spring Dance.
- **Fundraising & Grants** - the Committee helps us raise all the money we need to make sure we can support our students and staff in the best ways possible!
Co-Chairs: RuthAnn Clark and Abby McGill



Donate to the Bear Paw Fund

Our goal:
Raise **\$10,000** from families, friends, and neighbors
Reach **50%** family participation

How does the PTO plan to spend the money raised this year?

In consultation with Miner's administration and Miner's Local School Advisory Team (LSAT), the PTO's priorities for SY23-24 are to fund:

- \$200 "Mini Grants" for each classroom
- Field trips for all grade levels
- Support for our clubs and sports
- Family engagement events
- Teacher and staff appreciation
- And much more!

Suggested donation levels

\$1-\$49 (Small Paw)

\$50-\$249 (Medium Paw)

\$250-\$499 (Large Paw)

\$500+ (Grand Paw)

Any amount helps - please contribute what you can!

Miner Parents & Caregivers: Please consider donating a "Month for Miner"

Please consider donating the equivalent of a month's worth of tuition. Think about how much you would still be paying each month for private school, preschool, or daycare. Donate - or pledge to donate - as much as you're comfortable with. Donations by installments that you pay over the course of the year are welcomed! See below how to make a pledge.

How to donate:

Download, fill out, and email the [donation form](#) to minerpto@gmail.com or donate online at <https://www.minerelementary.org/donate-pledge-form.html>

How to Connect

- All parents, guardians, teachers, and staff are automatically members of the PTO
- To receive PTO email updates, “The Week Ahead” newsletter, and more, we encourage you to subscribe to the PTO email list by filling out this form:
<https://www.minerelementary.org/join-the-pto.html>
- Follow us on [social media](#)
 - School social media:
 - <https://twitter.com/MinerElementary>
 - <https://www.facebook.com/MinerDCPS/>
 - <https://www.instagram.com/minerelementaryschool/>
 - PTO social media:
 - <https://twitter.com/MinerPTO>
 - <https://www.instagram.com/Miner.PTO/>
 - Other Miner social media:
 - Miner Equity Team: <https://twitter.com/EquityMiner>
 - Miner Green Team: <https://www.instagram.com/Minerelementarygarden/>
- Follow the school calendar on the [Miner homepage](#)! You can even add it to your phone’s calendar. You can also do this with DCPS calendar—[click here](#) to learn how.



School Committees and Groups

- Mutual Aid Network - Chris Deutsch and Jon Clark
- LSAT - Mr. Jason Yoho and Julie Muir
- Green Team - Ms. Emma Creamer



Miner Mutual Aid Network

- Created as an equity committee action team in May 2020 to support the Miner Community during and after the pandemic.
- Mutual Aid is solidarity. Whether you need help or have help to give the Mutual Aid Network exists to provide support.
- Partnered with the Ward 6 Mutual Aid Network to provide PPE, food, household items and other supports to the Miner community.
- Established monthly Community Table events for the Miner community to access food, PPE, household items, children's books and toys, and distance learning support.
- **In order for the Mutual Aid Network to have continued success, we are looking for 4-5 volunteers to join our planning and action team. Sign up tonight or contact minermutualaid@gmail.com if you're interested.**





MINER MUTUAL AID
NETWORK

MONTHLY COMMUNITY TABLE

Solidarity. Community. Support.



Local School Advisory Team

- LSAT is present in every DCPS school and is comprised of elected representatives of parents, teachers, staff, community member(s), PTO leader, and WTU building rep.
- Primary purpose is to advise the Principal on school priorities, goals, budget, and comprehensive school plan.
- All meetings are open to the public, and all members of the Miner Community are welcome to join and ask questions. Exception is during closed budget deliberations in February. **The next meeting is Tuesday, October 17 at 5pm.**
- SY2023-34 LSAT:
 - Parents: Katrice Fuller-Whitaker, Andrea Jones, Nick Kushner, Julie Muir, Brandon Scott (appointed as PTO Rep)
 - Teachers: Ms. Dykes, Ms. Hillenbrand, Dr. Ramsey, Mr. Yoho, Mr. Martin (appointed as WTU Rep)
 - Staff: TBD (1 elected by non-WTU staff)
 - Community Rep: TBD (number may vary, elected by LSAT)
- At our first meeting last night, Mr. Yoho and Julie Muir were elected Chairs and Nick Kushner was elected Secretary.
- For more information on the Miner LSAT, visit <https://www.minerelementary.org/lSAT.html>

Direct questions to minereslsat@gmail.com



Miner Green Team

Learn more about FoodPrints here:

<https://www.freshfarm.org/foodprints>

Contact Ms. Emma at

emma@ffm.org

Follow the Garden on Instagram!

<https://www.instagram.com/minerelementarygarden/>





MINER PTO & ATLAS BREW
WORKS PRESENT THE

MIGHTY MINER HAPPY HOUR

ALL ARE INVITED TO OUR
MONTHLY HAPPY HOUR AT
ATLAS BREW WORKS. JUST
MENTION "MINER" AND THE
PTO GETS \$1 PER PINT!

**5-7 PM ON THE
FOLLOWING FRIDAYS:**

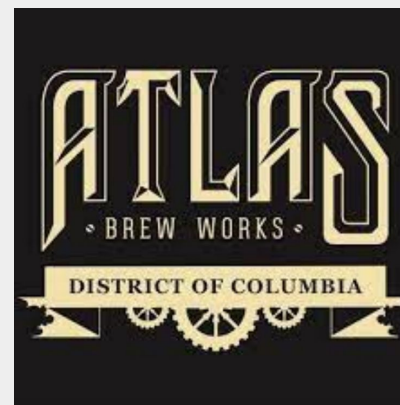
SEPTEMBER 22
OCTOBER 13
NOVEMBER 17
DECEMBER 15
JANUARY 19

FEBRUARY 23
MARCH 22
APRIL 26
MAY 17

ATLAS BREW WORKS IVY CITY
2052 WEST VIRGINIA AVE NE
ATLASBREWWORKS.COM
MINERELEMENTARY.ORG

Join Us for Our Monthly PTO Happy
Hour at Atlas Brew Works Ivy City!

- Atlas Brew Works
- 2052 West Virginia Ave NE
- Mention "Miner Elementary"
when you arrive
- For every pint purchased the
PTO gets \$1
- Held one Friday a month starting
September 22
- Kids, friends, family, dogs
welcome



WALK & ROLL TO SCHOOL DAY

- When: October 4, 7:30am
- Where: Lincoln Park
- What: Annual international event encouraging safe routes to school
- <http://www.walkbiketoschool.org/>

Each October Miner families and staff join other Capitol Hill schools at Lincoln Park for a fun event hosted by the [Ward 6 Public School Parents Organization \(W6PSPO\)](#). Traditionally we have guest speakers, presenters, and after a fun event we walk to school together.

Past speakers have included Rep. John Lewis, Del. Eleanor Holmes Norton, Mayor Muriel Bowser, CM Charles Allen, and more.

Past presenters have included the Miner Cheer Squad, the Eastern HS band, NPS, DC Water, and more.



Miner Spirit Store

Two ways to purchase:

- Purchase car magnets, yard signs, and t-shirts (sizes 3T - adult XXL) by emailing minerpto@gmail.com
- Visit our online spirit store at <https://www.cafepress.com/minerelementaryschoolspiritstore>



Treasurer's Report

Nick Heitger

minerptotreasurer@gmail.com



Treasurer Report (This Period)

Income & Expense Summary 5/31/23 to 8/31/23

Balance as of May 31st, 2023:	\$11,333.48
<i>Add: Income (May 31 thru Aug. 31)</i>	\$6,718.28
<i>Subtract: Expenses (May 31 thru Aug. 31)</i>	<u>-\$12,683.90</u>
Balance as of August 31st, 2023:	\$5,367.86

Notes:

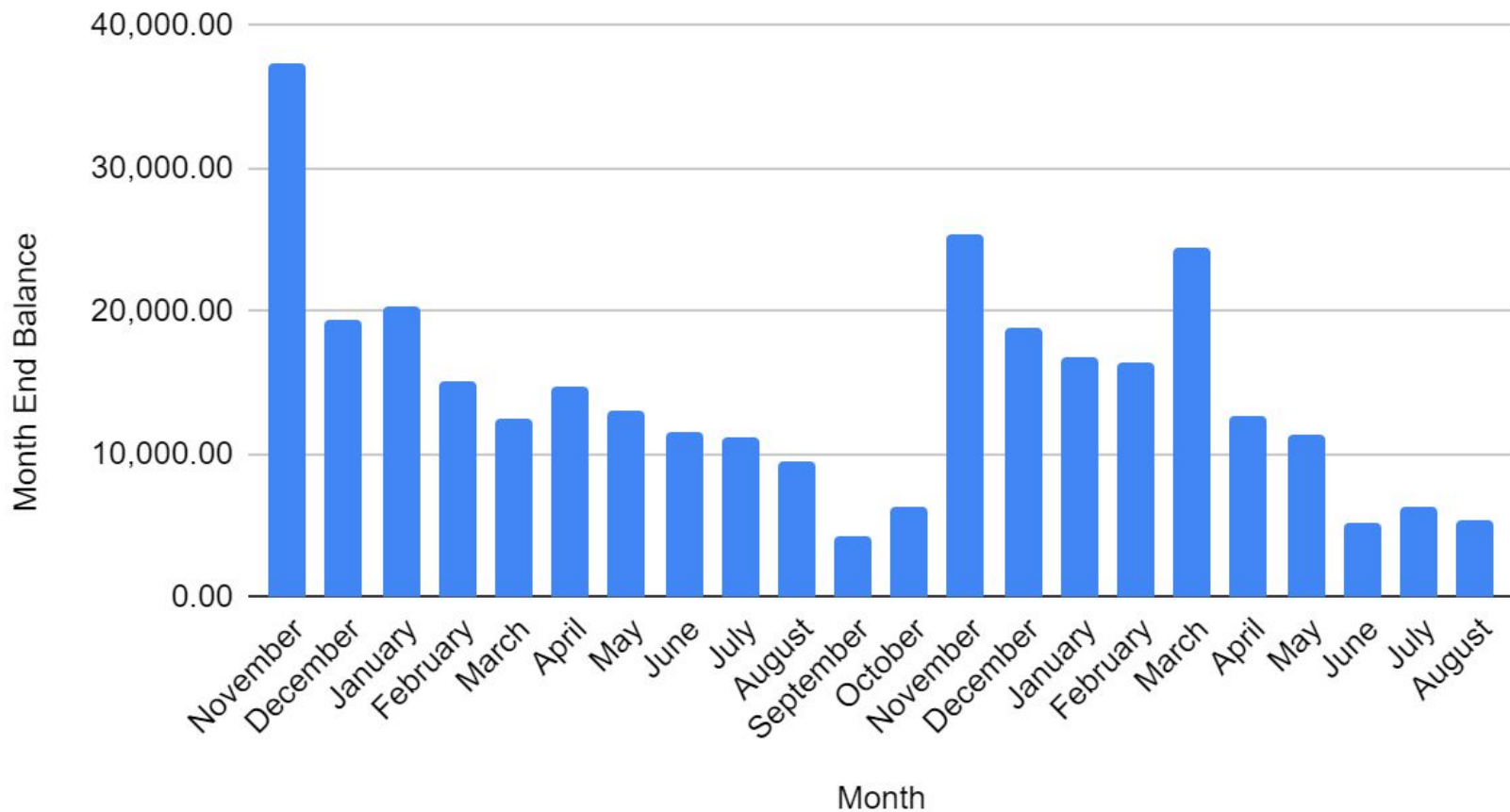
- Does not include ~\$4K check for tree deposit.
- Balance of checking account for General PTO currently around \$1K



Treasurer Report for June to August

Cash Balance by Month Summary 11/1/21 to 8/31/23

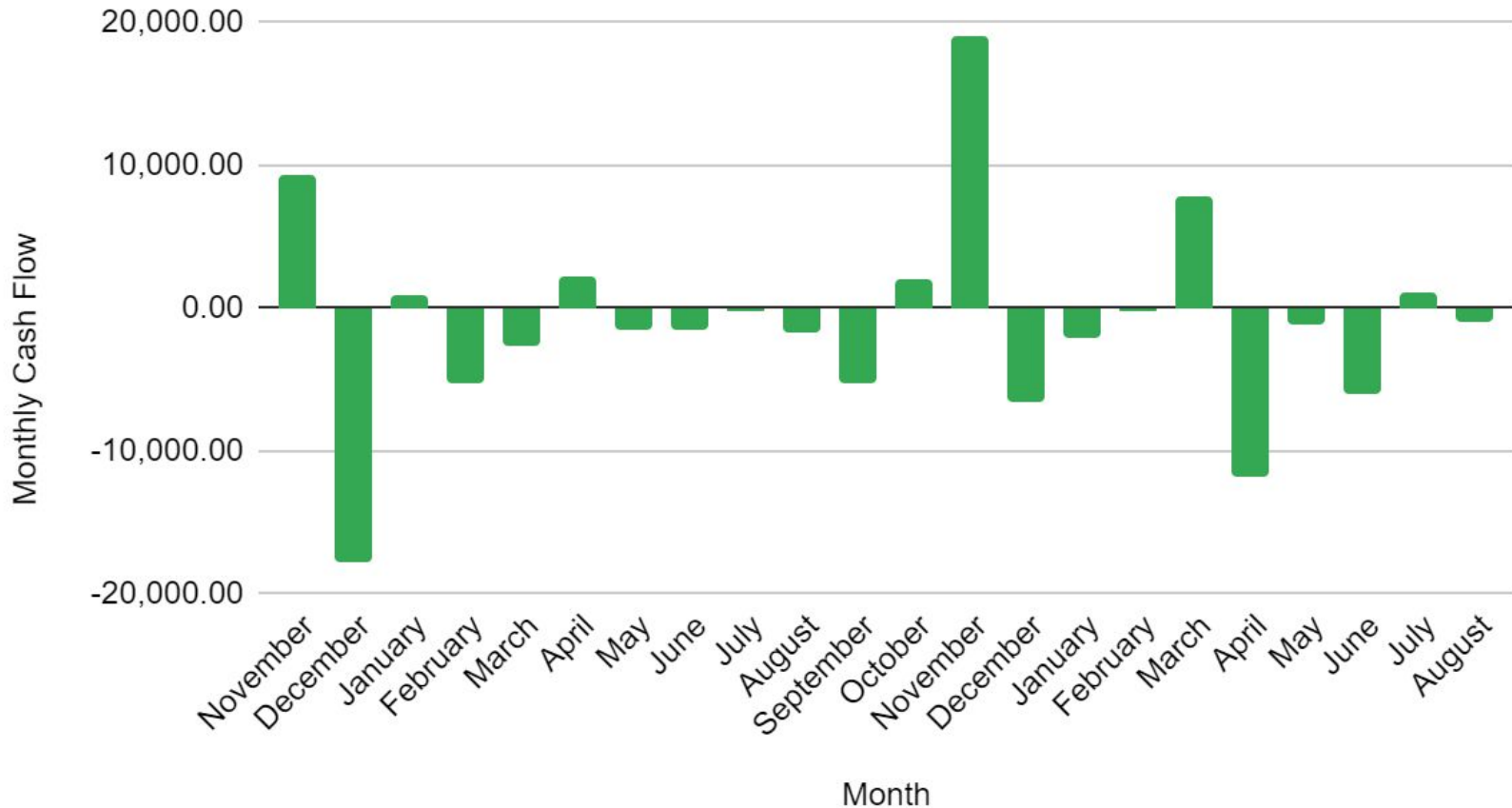
Month End Balance



Treasurer Report for June to August

Cash Flow Summary 11/1/21 to 8/31/23

Monthly Cash Flow



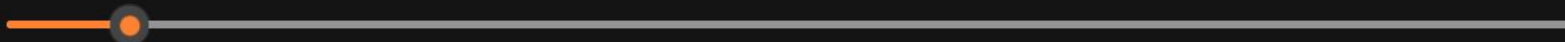
Teacher Representatives' Report

Ms. Hayes, Ms. Hillenbrand, and Mr. Yoho





0:00:15



0:03:24

My Movie 1 (1) (1)



BOY Assessments

Miner Testing Window September 5- 22, 2023

ELA

- ▶ DIBELS-phonological awareness (K-2nd)
- ▶ IReady Reading (K-5th)
- ▶ ANET- Achievement Network, comprehension (3rd-5th)

*Curriculum:

Heggerty-Phonological awareness (Pre-K - 2nd)

Foundations - Phonics Program (K-2nd)

Morpheme Magic - Word study-morphology (3rd - 5th)

Math- Eureka Math (K- 5th)

Science- Stemsopes (K- 5th)

Math

- ▶ I-Ready Diagnostic (K-5th)
- ▶ ANET (3rd-5th)

Note: ANet Math Assessment- October 24th
ANet ELA Assessment - October 11



Fall Clubs and Extracurricular Activities at Miner

LEGO Club (Grades K-5)

- Club Sponsors: Mr. Yoho (K-1) and Ms. Hillenbrand (2-5)

Art Club (Grades K-5)

- Club Sponsor: Ms. Pratt

DC Scores Soccer (Grades 1-5)

- If your student is in 1st - 5th grade and would like to join the Miner DC Scores soccer team, please fill out this registration form (it's free to join): register.dcscores.org
- Junior Scores: grades 1-2
- Elementary Scores: grades 3-5
- Info meeting: Wednesday, Sept. 13 from 3:30-4:30 for caregivers of interested students. Please complete the free registration before the info meeting!



Upcoming Events, Reminders, & Opportunities



Upcoming Events (1 of 3)

Wednesday, September 13

- **3:30 PM - 4:30 PM at Miner // DC Scores Meeting:** Join us to learn more about DC Scores for the upcoming season. DC Scores is for students in grades 1-5. Our Junior Scores team is for grades 1-2 and our Elementary Scores team is for grades 3-5. Please be sure to complete the [registration form](#) before the meeting (it's free!).

Friday, September 15

- **Hispanic Heritage Month Begins!**

September 18-22

- **National Security Officer Appreciation Week**

Friday, September 22

- **5:00 PM - 7:00 PM at Atlas Brew Works Ivy City // Mighty Miner Happy Hour:** All are invited to join us for our first monthly PTO happy hour at Atlas Brew Works! For every pint purchased, the PTO gets \$1. Bring your friends, bring your family, bring your kids. All are welcome. Just be sure to mention "Miner Elementary" when you place your order! For more info (including upcoming Happy Hour dates) [click here](#). We hope to see you there! Atlas Brew Works is located at 2052 West Virginia Avenue NE.

October 1-31

- **National Principals Month!**



Upcoming Events (2 of 3)

Monday, October 2

- **Custodian Appreciation Day**

Tuesday, October 3

- **6:00 PM - 7:00 PM in the Cafeteria // PTO General Meeting:** Join us for the first monthly meeting of the Miner Parent Teacher Organization for membership to hear the latest news, developments, and plans from the PTO leadership, Principal Dance, and more. [Click here for more information about the Miner PTO.](#)

Wednesday, October 4

- **7:30 AM in Lincoln Park // Walk (and Roll) to School Day:** Join families from Miner and our sister schools on Capitol Hill for this annual tradition! Meet in the park to gather and hear speeches from local dignitaries, then walk together to Miner to start the day! More information [here](#).

Monday, October 9

- **School Closed (Indigenous Peoples Day)**



Upcoming Events (3 of 3)

Friday, October 13

- **5:00 PM - 7:00 PM at Atlas Brew Works Ivy City // Mighty Miner Happy Hour:** All are invited to join us for our monthly PTO happy hour at Atlas Brew Works! For every pint purchased, the PTO gets \$1. Bring your friends, bring your family, bring your kids. All are welcome. Just be sure to mention "Miner Elementary" when you place your order! For more info (including upcoming Happy Hour dates) [click here](#). We hope to see you there! Atlas Brew Works is located at 2052 West Virginia Avenue NE.

Tuesday, October 17

- **5:00 PM - 6:30 PM via Zoom // LSAT Meeting:** All are welcome to observe the Local School Advisory Team's discussions with Principal Dance. For more information on the Miner LSAT, [click here](#).



Reminders & Opportunities

- To volunteer with the PTO, fill out [this form](#).
- If you are interested in joining a PTO Committee, visit <https://www.minerelementary.org/parent-teacher-organization.html> and email minerpto@gmail.com
- If you are interested in becoming more involved in the garden/with the Green Team, visit <https://www.minerelementary.org/green-team.html> and email Ms. Emma Creamer at emma@ffm.org
- If you would like more information on the Miner Mutual Aid Network visit <https://www.minerelementary.org/mutual-aid-network.html> and email minermutualaid@gmail.com
- To donate to the Miner PTO, visit <https://www.minerelementary.org/donate.html>
- Don't forget to attend an upcoming Mighty Miner Happy Hour at Atlas Brew works! The first one is September 22.



Thank You!

Any joys, questions, or concerns that you'd like to share?