

Miner PTO General Meeting

March 7, 2023

March is Women's History Month, and it's also the birth month of our namesake, Myrtilla Miner. Learn more about her on the [History](#) page of the [Miner website](#)!

Agenda

6:00 - 6:05 Welcome, Introductions, Reading of Minutes

6:05 - 6:15 Principal's Report

6:15 - 6:30 Old Miner Building Update

6:30 - 6:40 Garden/Green Team Presentation

6:40 - 6:45 Community School Update

6:45 - 6:55 School Committee Reports

Miner Mutual Aid Network

LSAT

6:55 - 7:05 PTO President & VP Report

7:05 - 7:10 Treasurer & Teacher Representative Reports

7:10 - 7:15 Upcoming Events, Reminders, Opportunities

Open Comment: Other joys, concerns, or questions?



Welcome!

- Welcome to our March PTO General Meeting!
- Reading of the [minutes](#).
- Thank you to our friends at Christ City Church for providing babysitting for the evening. They are in the Library.
- If you are joining us virtually, please be sure to ask your questions in the chat and they will be asked by our VP.
- After the meeting, please reach out to us at minerpto@gmail.com to let us know what you did/did not like about the virtual format - we would LOVE your feedback!
- Next PTO meeting date: Tuesday, April 4, at 6:00pm



Principal's Report

Principal Dance



Principal's Report

Mighty Miner Newsletter

3/6/23

IN THIS ISSUE:

- Principal's Message
- Calendar
- ECE Updates
- K-2 Updates
- 3-5 Updates
- PTO
- Athletics
- Inner Core Chronicles



PRINCIPAL'S MESSAGE

Greetings Mighty Miner Bear Family!

This month is Women's History Month so it's only fitting that we share a small glimpse of Myrtilla Miner's legacy and how it continues to live on in the Nation's Capital!

<https://thedig.howard.edu/all-stories/story-myrtilla-miner-and-her-role-uplifting-black-scholars-nations-capital>



Miner PTO General Meeting - March 7, 2023



Old Miner Building Update

Gabriella Pino-Moreno, Project Manager

<https://forms.gle/F7WFN5TA4fLVXx9s9>



PROJECT OVERVIEW

Details



Project Location: 601 15th St NE, Washington, DC 20002

Ward: 7

Capacity: 164

Grades Served: 0 – PK4

Completion: August 2024



Construction Type: Renovation of existing unoccupied historic building (ECE Addition, Pre-K3 – Pre-K4), new covered walkway to connect historic building and main building, and renovation of portion of main building (CDC 0 - 3).



Swing: N/A



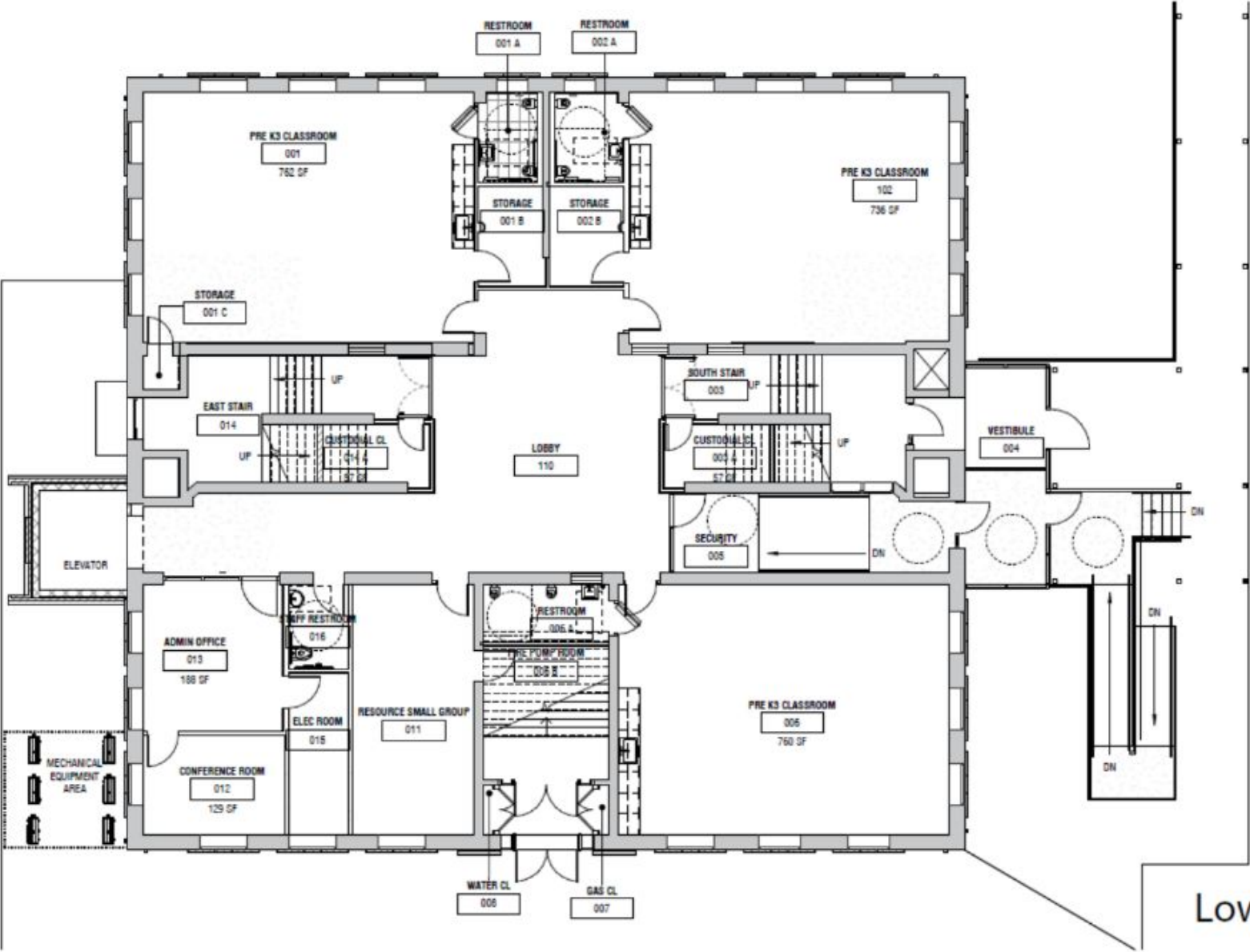
CONTACTS

General Contractors: Chiaramonte

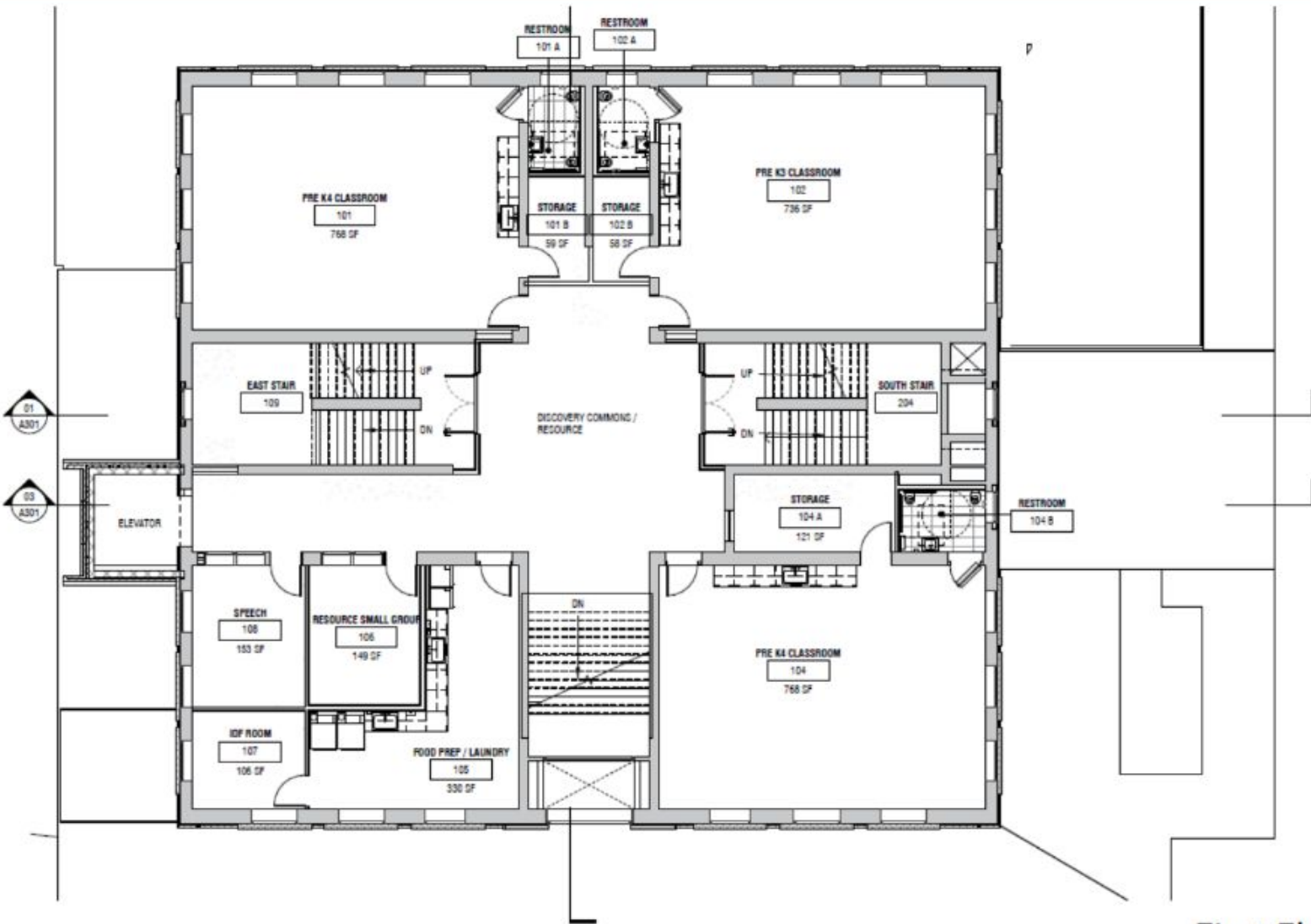
Architect: Shinberg.Levinas

DCPS Coordinator: [Gabriella Pino-Moreno](#)

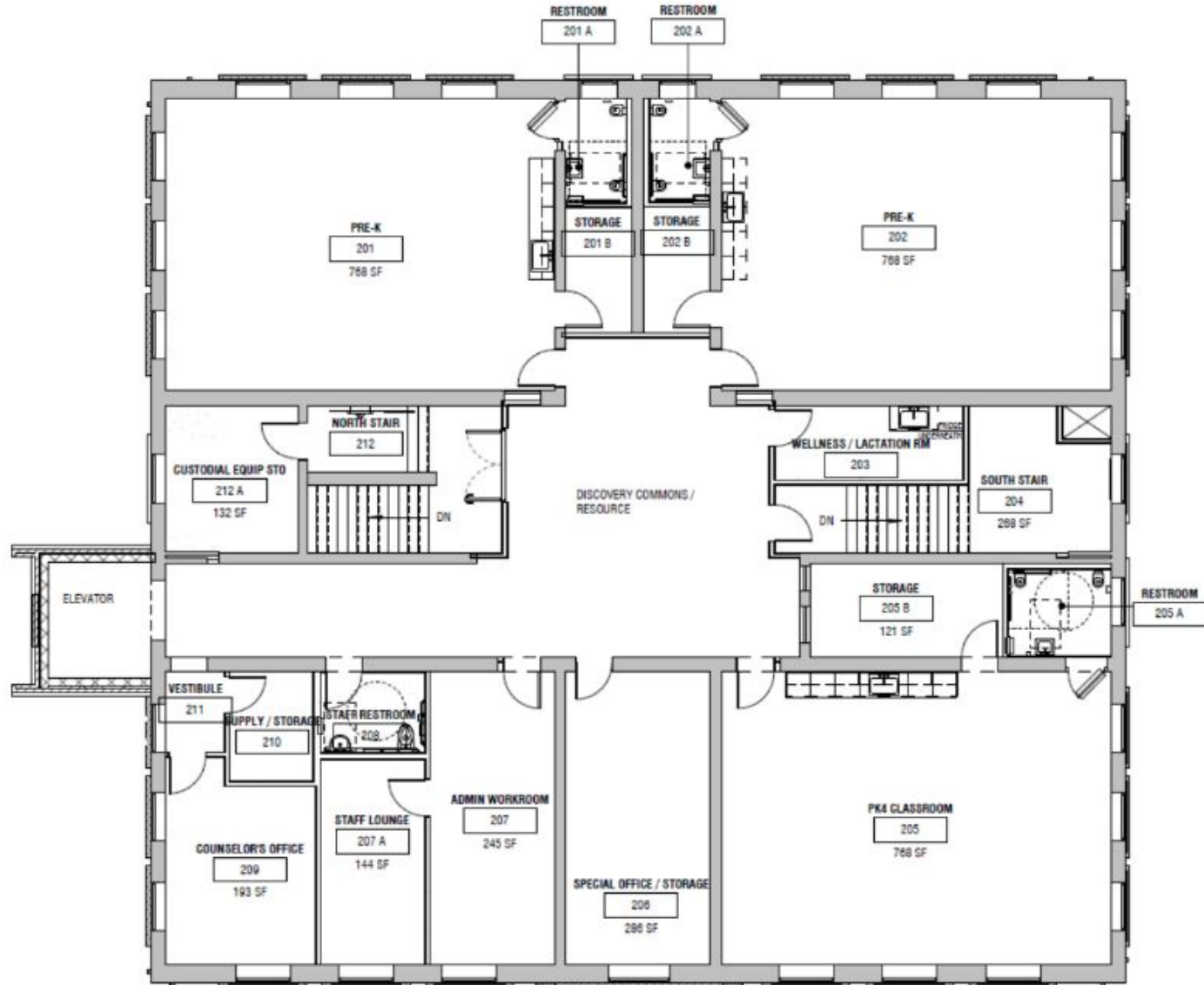
DGS Project Manager: Eupert Braithwaite



Lower Level Plan



First Floor Plan





PLAYGROUND FEEDBACK PROCESS

- **Today's meeting:** We will review the overall site design and then discuss the aesthetic features and play elements that you would like to see included in the playground. Graphics shown today are only examples meant to inspire.
- **Next steps:** DCPS will gather feedback to inform designers' design narrative to explain to the playground vendor what your community wants. Please submit your feedback through the survey below:

Playground Visioning Survey: <https://forms.gle/sUi4pV7RrmAVwzjf9>

- At the next SIT meeting we will present playground layouts that are created based on your feedback and the narrative and gather feedback on likes and dislikes of the proposed designs.
- **Final Steps:** After the design is revised, the DCPS Facility Planning and Design Team will meet with school admin to review the finalized design and provide comments. The final design will be presented to the SIT.

PLAYGROUND AESTHETICS DISCUSSION

- What color scheme or 'look' do we want the playground to have?
 - School Colors
 - Neon Colors
 - Primary Colors
 - Earth tones
- To what extent, do we want one connected piece of equipment versus more separate items?

PLAYGROUND FUNCTION DISCUSSION

Playground Elements

Playground elements include items that students interact with in the play space. DCPS installs multi-user equipment to allow more than one student to utilize equipment through:

- Climbing
- Sliding
- Rocking
- Spinning
- Hanging
- Passive Play

OLD MINER - EARLY LEARNING CENTER

SITE CONTEXT

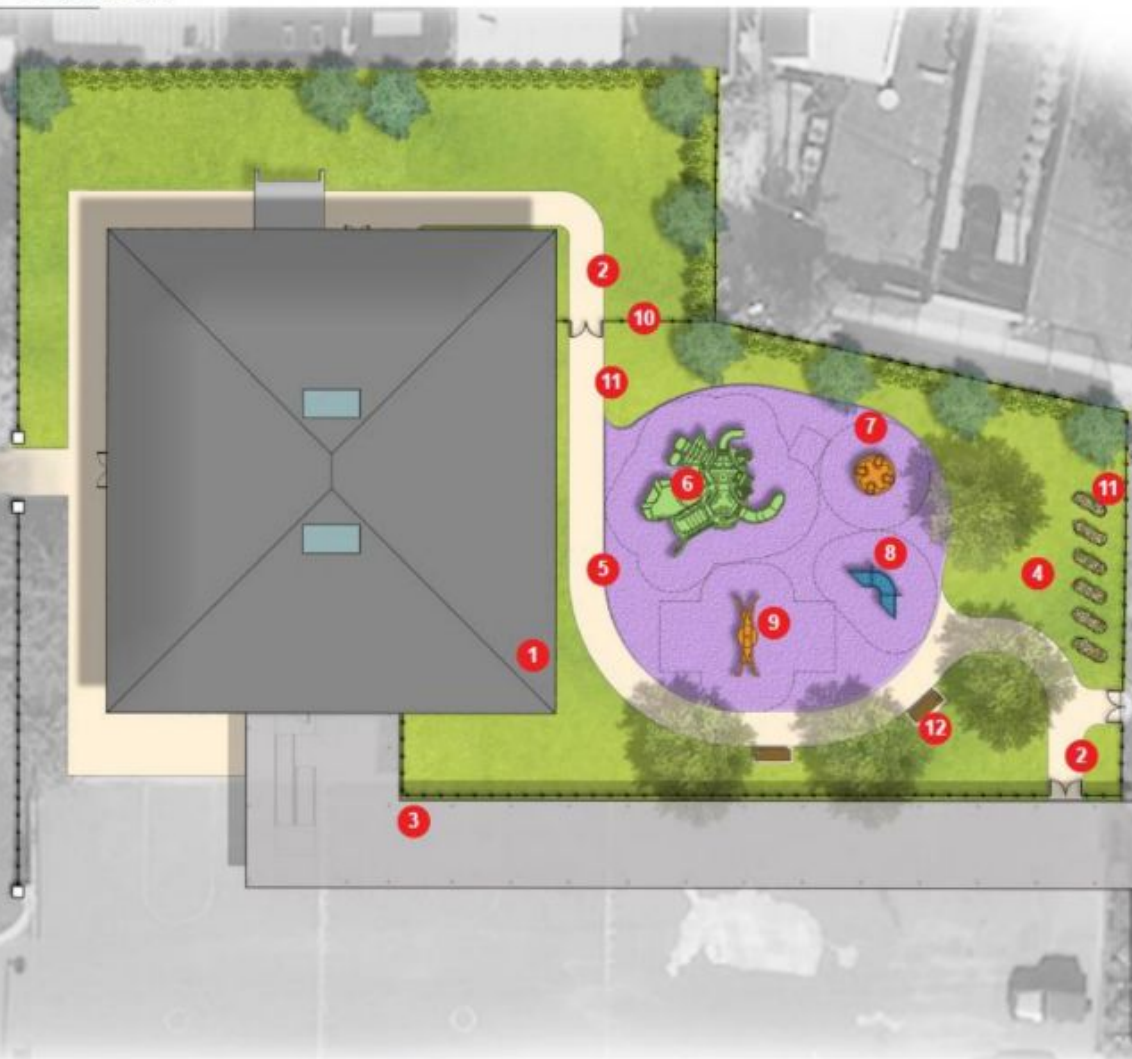


OLD MINER - EARLY LEARNING CENTER

EARLY LEARNING CENTER - OPTION 1

This option uses a planted evergreen screen to provide separation from the playground and the alley neighbors. The playground shares a color palette with other play equipment present on the campus. It features raised galvanized planters and standard park benches with a generous open play area. It proposes to provide access to the lower garden area of the elementary school.

- 1 SCHOOL BUILDING
- 2 ACCESS PATH
- 3 COVERED WALKWAY
- 4 OPEN PLAY SPACE
- 5 PLAYGROUND
- 6 HEDRA PLAY STRUCTURE
- 7 OMNI SPINNER
- 8 MOBIUS CLIMBER
- 9 BASKET SWING
- 10 FENCE
- 11 STOCK TANK PLANTERS
- 12 6' BENCHES



OLD MINER - EARLY LEARNING CENTER

PLAY EQUIPMENT - LANDSCAPE FORMS



HEDRA PLAY STRUCTURE



MOBIUS CLIMBER



BASKET SWING



OMNI SPINNER



6' BENCH



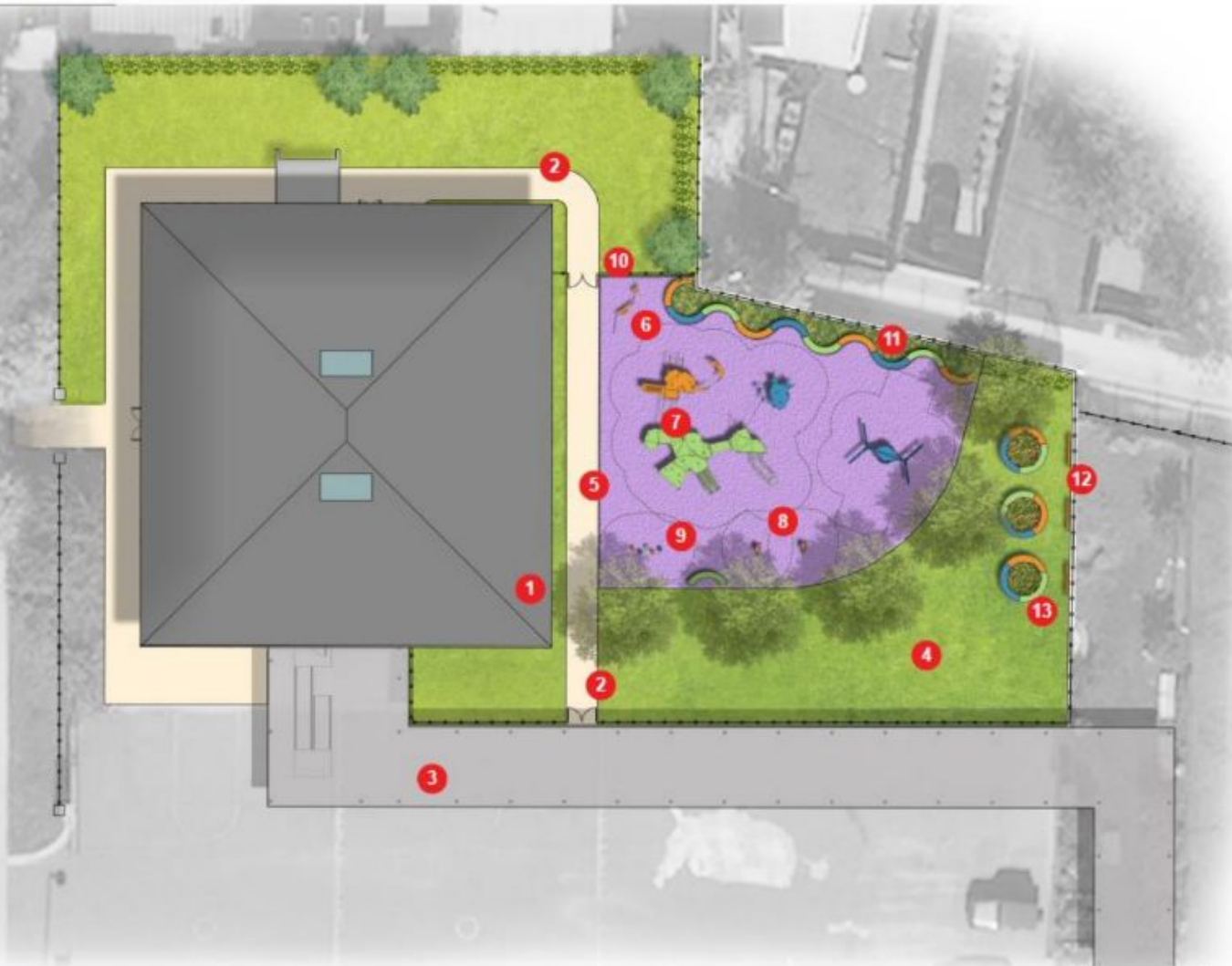
STOCK TANK PLANTERS

OLD MINER - EARLY LEARNING CENTER

EARLY LEARNING CENTER - OPTION 2

This option uses a planted bamboo screen to provide separation from the playground and the alley neighbors. The playground shares a color palette with other play equipment present on the campus. It features raised planters surrounded by benches for interaction with the natural world and fence mounted blackboards for outdoor classroom experiences or for expressing creativity.

- 1 SCHOOL BUILDING
- 2 ACCESS PATH
- 3 COVERED WALKWAY
- 4 OPEN PLAY SPACE
- 5 PLAYGROUND
- 6 ACTIVITY PANELS
- 7 HIKER PLAY STRUCTURE
- 8 SPRINGE RIDERS
- 9 STEPPER
- 10 FENCE
- 11 CURVED BENCHES WITH PLANTED SCREEN
- 12 FENCE MOUNTED CHALK BOARDS
- 13 CURVED BENCH PLANTERS



OLD MINER - EARLY LEARNING CENTER

PLAY EQUIPMENT - KOMPAN



HIKER PLAY STRUCTURE



ACTIVITY PANELS



FENCE MOUNTED CHALK BOARDS



CURVED BENCH PLANTERS



CURVED BENCHES



SPRING RIDER



STEPPER

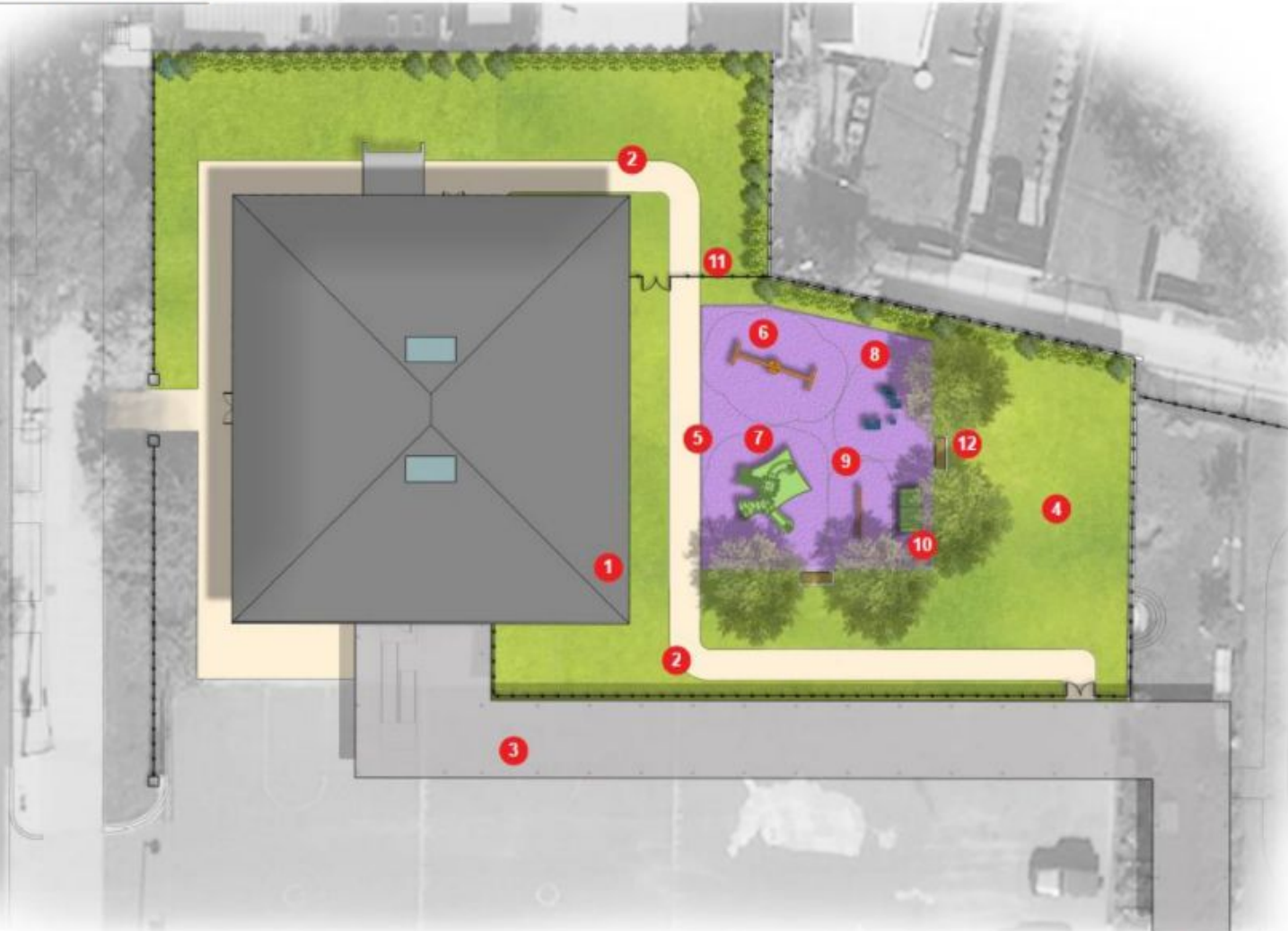


OLD MINER - EARLY LEARNING CENTER

EARLY LEARNING CENTER - OPTION 2

This option uses a planted bamboo screen to provide separation from the playground and the alley neighbors. The playground shares a color palette with other play equipment present on the campus. It features raised planters surrounded by benches for interaction with the natural world and fence mounted blackboards for outdoor classroom experiences or for expressing creativity.

- 1 SCHOOL BUILDING
- 2 ACCESS PATH
- 3 COVERED WALKWAY
- 4 OPEN PLAY SPACE
- 5 PLAYGROUND
- 6 TIRE SWING
- 7 CHALLENGER PLAY STRUCTURE
- 8 CLIMBING BLOCKS
- 9 BALANCE BEAM
- 10 PLAY HOUSE
- 11 FENCE
- 12 6' BENCHES



OLD MINER - EARLY LEARNING CENTER

PLAY EQUIPMENT - PLAY WORLD



CHALLENGER PLAY STRUCTURE



CLIMBING BLOCKS



TIRE SWING



BALANCE BEAM



6" BENCH



PLAY HOUSE

PLAYGROUND SURFACES

Color Samples



Garden/Green Team Presentation

Ms. Ashley Luttmer, School Garden Coordinator

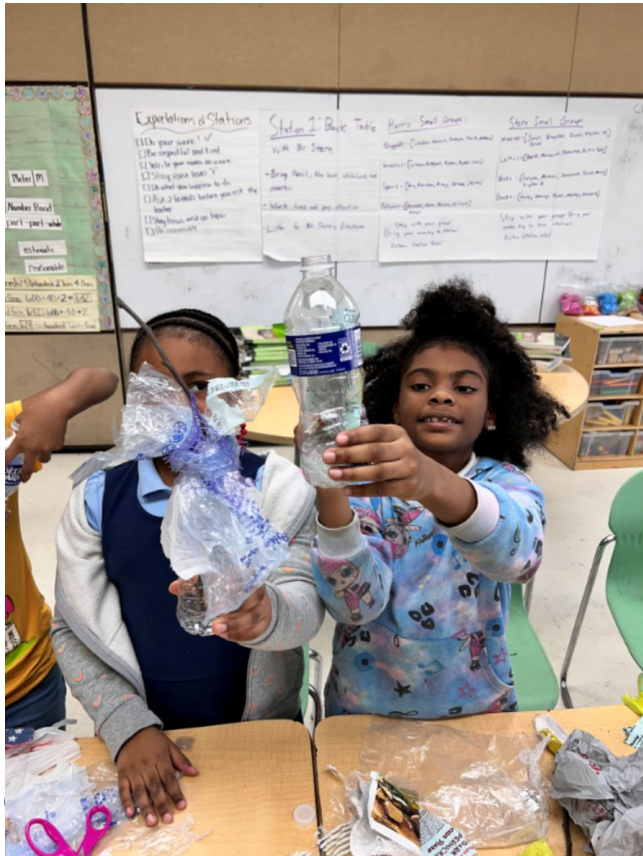
Ms. Emma Creamer, FoodCorps Service Member

<https://www.minerelementary.org/green-team.html>



In the Classroom

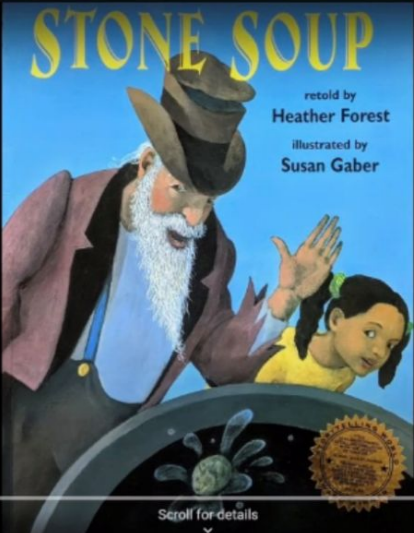
5th grade students making bioplastic to learn about George Washington Carver during Black History Month.



Mr. Martin's 3rd grade class making strawberry jam to learn about the food production system.

Family Cooking Night!

Soup Read Aloud




STONE SOUP

retold by
Heather Forest

illustrated by
Susan Gaber

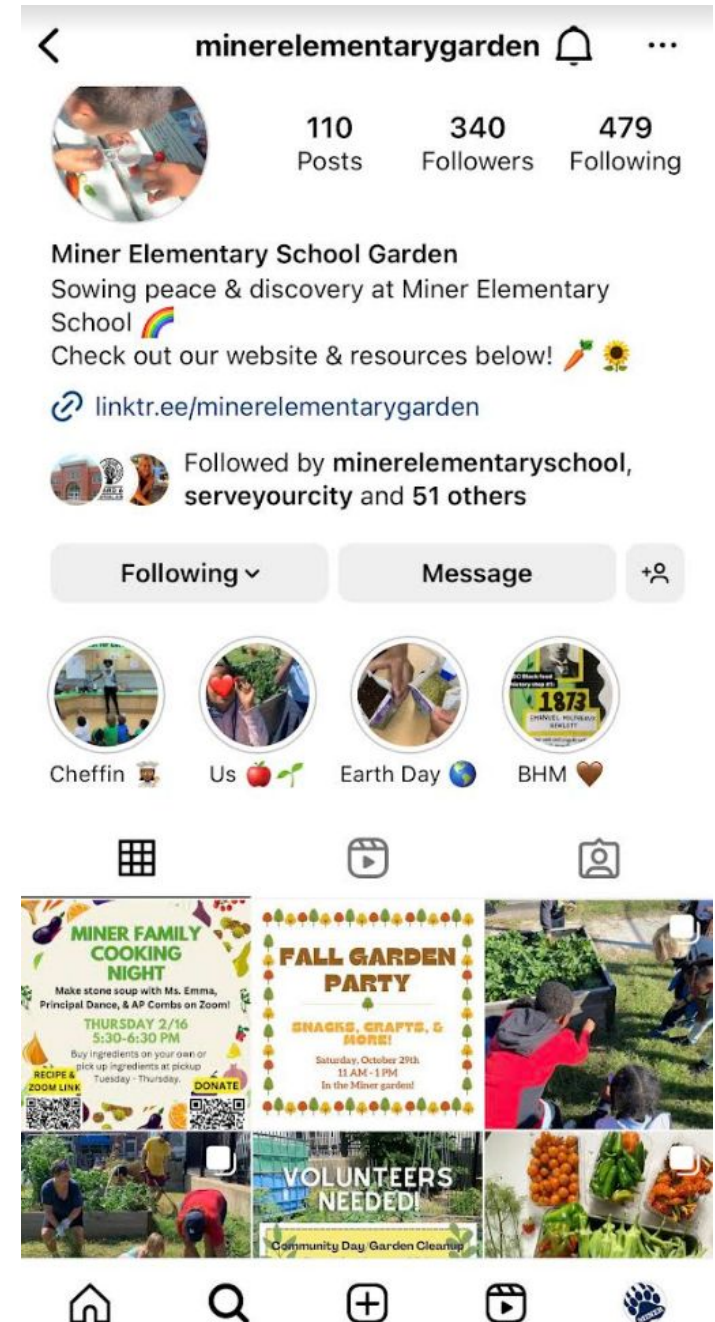
0:03 / 5:42

Scroll for details



Upcoming Events

- Green Team Meeting March 8 (tomorrow) at 3:30pm in Room 121
- Keep an eye out to help set up our shed & for spring workdays to come
- Follow the Garden on Instagram! @minerelementarygarden



Community School Update

Ms. ShaLisa Richardson

<https://www.minerelementary.org/community-school.html>



Community School Update

- Stay tuned for some upcoming events/announcements that are still in the planning stage
- We still have a need for new or gently used uniforms (especially pants) in sizes 4-6
- Donations can be dropped off in the Main Office to the attention of “Community School Coordinator” and you can also email Ms. Richardson at srichardson@ebfsc.org
- Kindred is still recruiting for the dialogue groups and hope to have an update by end of the month. Please scan the QR code if you would like to participate.



School Committee Reports

Mutual Aid Network
LSAT



Miner Mutual Aid Network

Chris Deutsch

<https://www.minerelementary.org/mutual-aid-network.html>



How Can I Help?

Financial and in-kind donations to support Miner Mutual Aid can be made through the Miner PTO via the [Donation page](#).

- **EBT Cards** - If you have EBT funds and would like to contribute toward food and household items for the next Community Table, please contact Miner mutual aid at minermutualaid@gmail.com or reach out to Chris Deutsch at 202-222-8105. This is a fantastic source of support for the community and goes a long way to ensuring we have all we need for the event. If you would like to learn more about volunteering either at an event or as part of the planning team, or would like to set up a time to drop off a donation, don't hesitate to reach out as well

Next Community Table: Saturday, March 25



How Can I Receive Help?

- Requests for support can be made by filling out [an online Google form](#).
The requests are only seen by the members of the Mutual Aid Network Team and will never be shared.
- Alternatively, you can also reach out to any Miner teacher, the Community School Coordinator, or Social Worker.



LSAT Report

Mr. Jason Yoho and Julie Muir
Next Meeting: March 21, 5pm

<https://www.minerelementary.org/lsat.html>



Local School Advisory Team

- LSAT is present in every DCPS school and is comprised of elected representatives of parents, teachers, staff, and a community member - plus PTO leader and WTU building rep.
- Primary purpose is to advise the Principal on school priorities, goals, budget, and annual school plan.
- SY2022-23 Co-Chairs: Mr. Jason Yoho and Julie Muir
- All meetings are open to the public, and all members of the Miner Community are welcome to listen in and ask questions. Exception is during closed budget deliberations in February.
- For more information on the Miner LSAT, visit <https://www.minerelementary.org/lSAT.html>
- Direct questions to minereslsat@gmail.com



Regular PTO Business



President & VP Reports

- Current and Upcoming Fundraising Opportunities
- Bear Paw Fund
- Save the Date: Upcoming School-Wide Events
- How to Connect



Krispy Kreme Fundraiser

- Until March 11, you can [purchase a dozen Krispy Kreme donuts](#) - buyers will receive a redemption code that can be used at any Krispy Kreme across the country - and Miner Elementary School will get half of the sale price!
- This is a great opportunity for friends and family who want to support Miner to do so, even outside of the DC area. So get your donuts and please help us spread the word by sharing the link in your networks!



Miner PTO General Meeting - March 7, 2023



MINER PTO PRESENTS A



FUNDRAISER!

For every dozen donuts sold, Miner PTO gets 50% of the profits! Shop using the link below and then pick up your dozen at a Krispy Kreme near you. Share it with your friends and family because the more we sell, the more we earn!

www.groupraise.com/offer-campaigns/8446



Krispy Kreme Digital Dozens Supporting

Miner Elementary PTO

Get Your Dozens



Help Us Reach Our Goal



Organized by: **Miner PTO**

We support the students and staff at Miner Elementary School, a Title 1 school in Washington DC.

22%

22 dozens sold of 100 dozens goal

\$150.92 Raised | 12 Supporters

4
DAYS

11
HOURS

32
MINUTES

38
SECONDS

Let's get 78 dozens more!

? Help



“Have a Heart” Coin Drive

- Send your student to school with coins to place in their class's bucket!
- The class with the heaviest bucket will earn a donut party after spring break.
- The winning class will be announced at the spring dance, April 14th.



Miner PTO General Meeting - March 7, 2023

**HAVE A
HEART
COIN DRIVE**

FEBRUARY 14 - APRIL 14

DONATE COINS TO THE MINER
ELEMENTARY COIN DRIVE - THE
CLASS WITH THE HEAVIEST BUCKET
WINS A DONUT PARTY! ALL
PROCEEDS BENEFIT
THE MINER PTO.

MINERELEMENTARY.ORG
MINERPTO@GMAIL.COM

Capital Candy Jar Fundraiser

- In another sweet deal that supports our school, come by the Capital Candy Jar, 201 15th Street NE, on March 18 & 19.
- Mention Miner to receive 5% off your order, and Miner will get 25% of the proceeds from those sales!
- We will also set a playdate time to gather with other Miner families outside the shop that weekend. Details to come.



Miner PTO General Meeting - March 7, 2023

MINER PTO PRESENTS OUR ANNUAL

CAPITAL CANDY JAR FUNDRAISER

JOIN US FOR THE SWEETEST DEAL IN TOWN

MARCH 18 AND 19
12:00PM - 7:00PM
AT THE CAPITAL CANDY JAR

201 15TH STREET NE
CAPITALCANDYJAR.COM

ON MARCH 18 AND 19 MENTION MINER ELEMENTARY WHEN SHOPPING IN-PERSON AT THE CAPITAL CANDY JAR TO RECEIVE 5% OFF YOUR ORDER.* THE CAPITAL CANDY JAR WILL GENEROUSLY DONATE 25% OF THE PROFITS FROM THOSE SALES TO THE MINER PTO.

*CANNOT BE COMBINED WITH OTHER OFFERS

Atlas Brew Works Happy Hour Fundraiser

- Following a very successful happy hour before the February break, we will again partner with [Atlas Brew Works](#) for an event on March 31.
- From 4-7pm, stop into the Ivy City location at 2052 West Virginia Avenue NE and identify yourself as being with the Miner Elementary group.
- The Miner PTO will get a dollar for each pint our group buys in that timeframe.



Miner PTO General Meeting - March 7, 2023



Bear Paw Fund

<https://www.minerelementary.org/bear-paw-fund.html>



I would like to contribute to Miner Elementary PTO's **BEAR PAW FUND**
and help reach our 50% family participation and \$10,000 fundraising goal
for the 2022-23 school year!

MY GIFT AMOUNT: \$ _____

The Miner PTO is a 501c3 charitable organization and all gifts are fully tax-deductible - tax receipts will be provided.

Suggested Amounts: \$1-\$49 (Small Paw) \$50-\$249 (Medium Paw) \$250-\$499 (Large Paw) \$500+ (Grand Paw)

Or consider Donating a month for Miner! *Think about how much you would be paying each month for private school, preschool, or daycare. Donate - or pledge to donate - as much of that as you can.*

Child(ren) Name(s): _____

Child(ren) Teacher(s): _____

Donor Name: _____ Donor Contact (email or phone): _____

Donor Address/City/State/Zip: _____

Circle the Paw Size that's right for you, fill out the above information and leave this form in the main office,
return it to your child's teacher or to any PTO leader.

CONTRIBUTION OPTIONS

The PTO accepts checks (made payable to "Miner PTO"), via Venmo @MinerPTO, online at www.minerelementary.org/donate,
or use the QR Code on the back of this form.

___ I would like to contribute my gift in full today via check, Venmo or credit card.

___ I would like to pledge my gift in monthly installments to sustain the PTO long-term (Choose monthly donations on [PayPal page](#)).

___ I will check with my employer to see if they match charitable giving. (Many employers/workplaces offer fully or partially matched donations made by employees. Share this opportunity with your employer to see if they're willing to support the Bear Paw Fund too!).

___ I want to contribute another way: _____

This pledge form is also available online at www.minerelementary.org/donate-pledge-form

Bear Paw Fund

<https://www.minerelementary.org/bear-paw-fund.html>



Every gift makes a difference, no matter the size!

Your contribution helps the Miner Parent Teacher Organization (PTO) fund great things for Miner students and the Miner community:

- Field Trips
- Classroom Technology
- Classroom Supplies
- Schoolwide Events
- Garden Program
- Mutual Aid Network

And so much more!



Scan the QR code above to donate NOW!

For more information about Miner and the PTO,
visit: [minerelementary.org](https://www.minerelementary.org)

Want to donate time instead? Check this box to hear about school volunteer opportunities! ☐

This pledge form is also available online at www.minerelementary.org/donate-pledge-form

Upcoming School-Wide Events



MINER PTO PRESENTS THE ANNUAL

SPRING DANCE!

OUR ANNUAL FAMILY ENGAGEMENT
SPRING DANCE IS BACK FOR THE FIRST
TIME IN 3 YEARS! ALL ARE INVITED!

FRIDAY, APRIL 14, 2023
6:00 - 8:00 PM
MINER ELEMENTARY SCHOOL

ALL STUDENTS MUST BE ACCOMPANIED BY AN ADULT.

FAMILIES WHO HAVE ENROLLED IN SCHOOL FOR SY23-24 WILL
BE ENTERED IN A RAFFLE TO WIN COOL PRIZES! MUST BE
PRESENT TO WIN. THERE WILL BE AN OPPORTUNITY TO
ENROLL AT THE DANCE.

VISIT OUR WEBSITE AT MINERELEMENTARY.ORG/DANCE FOR
MORE INFORMATION, INCLUDING RSVP AND VOLUNTEER
OPPORTUNITIES.



BIKE & ROLL

TO SCHOOL DAY

JOIN US MAY 3, 2023!

WALKBIKETOSCHOOL.ORG

How to Connect

- All parents, guardians, teachers, and staff are automatically members of the PTO
- To receive PTO email updates, “The Week Ahead” newsletter, and more, we encourage you to subscribe to the PTO email list by filling out this form:
<https://www.minerelementary.org/join-the-ptol.html>
- Follow us on [social media](#)
 - School social media:
 - <https://twitter.com/MinerElementary>
 - <https://www.facebook.com/MinerDCPS/>
 - <https://www.instagram.com/minerelementaryschool/>
 - PTO social media:
 - <https://twitter.com/MinerPTO>
 - <https://www.instagram.com/Miner.PTO/>
 - Other Miner social media:
 - Miner Equity Team: <https://twitter.com/EquityMiner>
 - Miner Green Team: <https://www.instagram.com/Minerelementarygarden/>
- How to share messages: email minercomms@gmail.com and specify which platforms you would like your messages shared on (schoolwide messaging, social media only, etc)
- Follow the school calendar on the [Miner homepage](#)! You can even add it to your phone’s calendar.



Treasurer Report

Nick Heitger



Treasurer Report (This Period)

Income & Expense Summary 2/1/23 to 2/28/23

Balance as of January 31st, 2023::	\$16,760.53
<i>Add: Income (Feb. 1 thru Feb. 28)</i>	\$622.73
<i>Subtract: Expenses (Feb. 1 thru Feb. 28)</i>	<u>-\$903.57</u>
Balance as of February 28th, 2023:	\$16,479.69

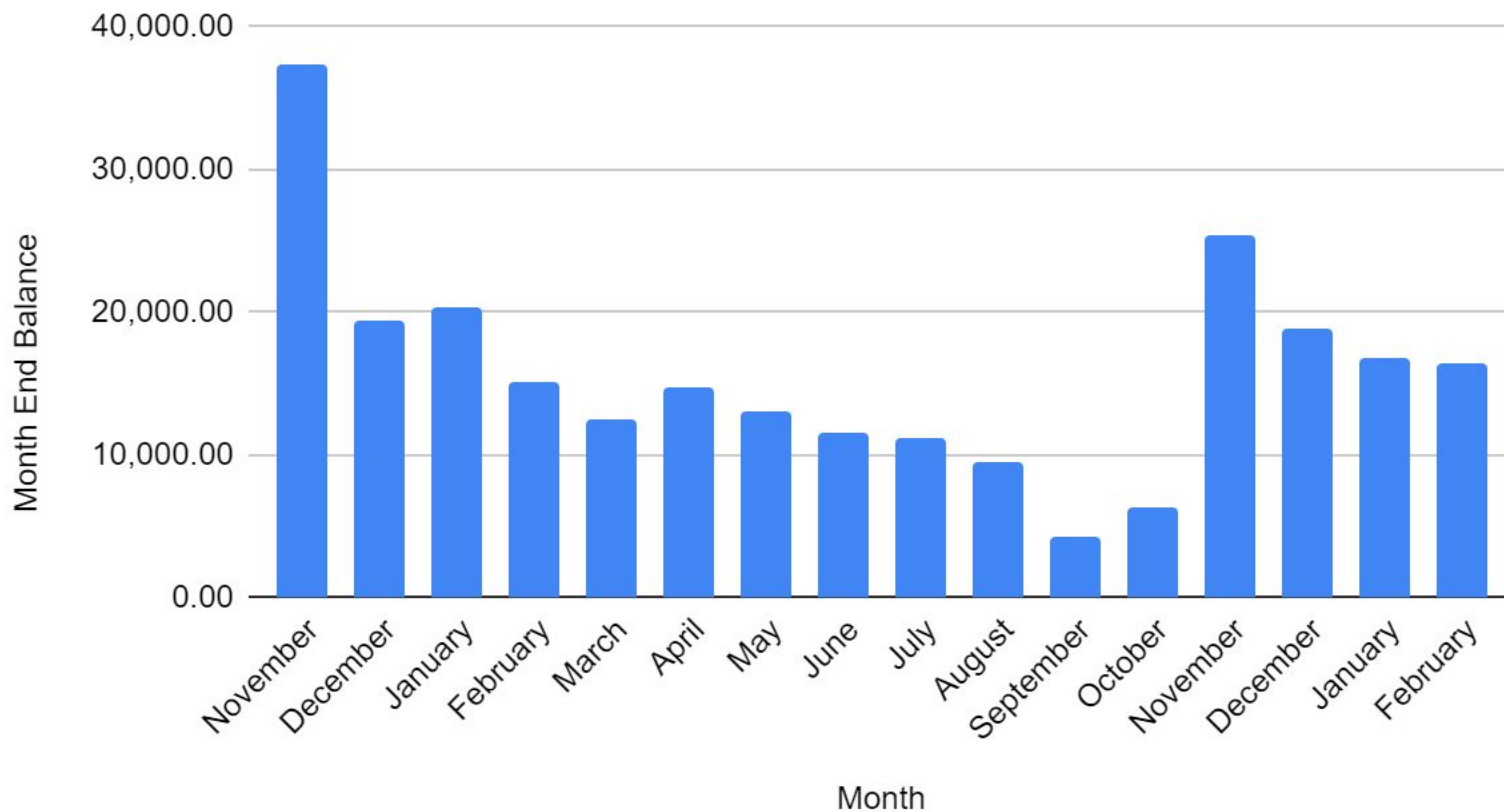
Note: Currently owe an add'l \$7,500 for Food Corp. & New Checking Account has been established for Community Table (~\$115 Balance after February Purchases)



Treasurer Report (This Period)

Cash Balance by Month Summary 11/1/21 to 2/28/23

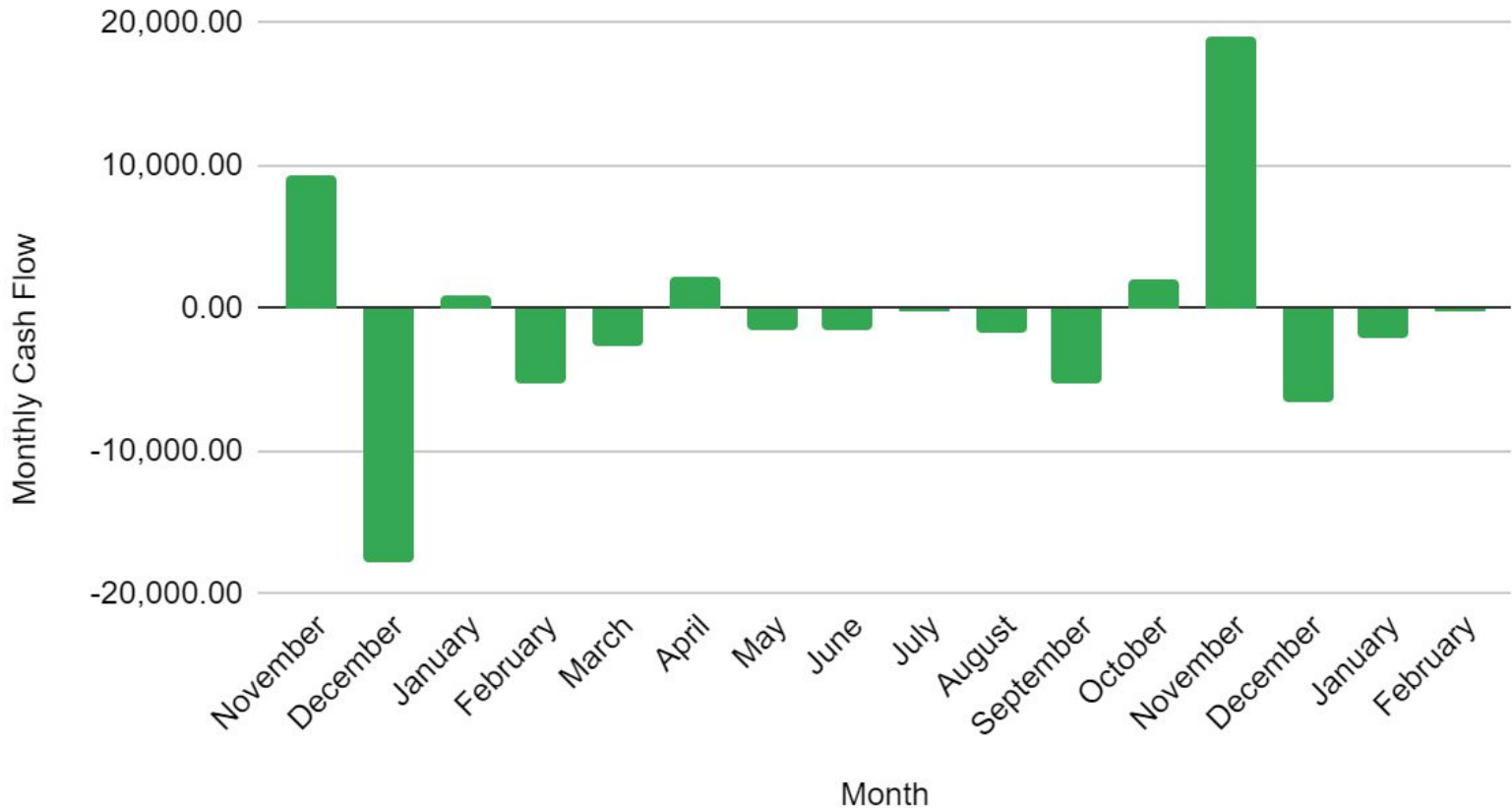
Month End Balance



Treasurer Report (This Period)

Cash Flow Summary 11/1/21 to 2/28/23

Monthly Cash Flow



Teacher Representative Report

Ms. Hayes



Teacher Representative Report

- No School for Students March 9, March 10, and April 10
 - Parent Teacher Conferences March 9
 - Records/PD Day March 10 and April 10
- Spring Break - April 17-21
- PARCC Testing begins in April



Upcoming Events, Reminders, & Opportunities



Upcoming Events (1 of 3)

Wednesday, March 8

- **3:30 PM - 4:15 PM in Room 121 // Green Team Meeting:** All are invited to join the Green Team for their next meeting. Help Ms. Emma and Ms. Luttmer and the team as they begin planning for Earth Day! Please contact [Ms. Emma](#) for more information.

Thursday, March 9

- **Parent Teacher Conferences:** No school for students.

Friday, March 10

- **Professional Development Day for Staff:** No school for students.

Saturday, March 18 and Sunday, March 19

- **12:00 PM - 7:00 PM at Capital Candy Jar // Fundraiser:** Join us for the sweetest deal in town! Just mention Miner Elementary at [The Capital Candy Jar](#) (201 15th St NE) and you'll get 5% off your purchase. The Capital Candy Jar will generously donate 25% of those sales to the Miner PTO. Support your school, a local business, and your sweet tooth all with one purchase! [See the flyer for all the details.](#)

Tuesday, March 21

- **5:00 PM - 6:30 PM via Zoom // LSAT Meeting:** All are welcome to observe the Local School Advisory Team's discussions with Principal Dance. For more information, visit our dedicated [LSAT webpage](#).



Upcoming Events (2 of 3)

Tuesday, March 28

- **5:00 PM - 6:00 PM via Zoom // PTO Leadership Team Meeting:** The monthly meeting of the PTO Executive Board and Committee Chairs is open to anyone interested in attending and/or providing feedback to PTO leadership. [Click here for more information about the Miner PTO.](#)

Friday, March 31

- **4:00 PM - 7:00 PM at Atlas Brew Works Ivy City // PTO Fundraiser Happy Hour:** All are invited to our second happy hour at [Atlas Brew Works!](#) We had so much fun at our fundraiser in February that we thought we would make it a monthly event. For every pint purchased, Miner PTO gets \$1. Just mention "Miner Elementary" when you buy your beer! [Atlas Brew Works Ivy City](#) is located at 2052 West Virginia Ave NE. Contact minerpto@gmail.com with questions.
- **My School DC Lottery Results Released:** If you entered the My School DC Lottery, be sure to check your email on Friday, March 31 for your lottery results. For more information, visit myschooldc.org.

Sunday, April 1

- **DCPS Enrollment Opens:** Beginning today, parents/guardians may enroll their students in DCPS schools. Students who were matched via the My School DC lottery are required to enroll by May 1, 2023 or they may lose their seat. For more information, visit the [DCPS enrollment website](#) and look for information from Miner in the coming days.

April 3-7 is Assistant Principal's Week



Upcoming Events (3 of 3)

Tuesday, April 4

- **6:00 PM - 7:00 PM in the Cafeteria // PTO General Meeting:** Join us for the PTO's regular monthly meeting for membership to hear the latest news, developments, and plans from the PTO leadership, Principal Dance, and special guests. A virtual option will be available. [Click here for more information about the Miner PTO.](#)

Monday, April 10

- **Professional Development and Records Day for Staff:** No school for students.

Tuesday, April 11

- **5:00 PM - 6:30 PM via Zoom // LSAT Meeting:** All are welcome to observe the Local School Advisory Team's discussions with Principal Dance. For more information, visit our dedicated [LSAT webpage](#).

Friday, April 14

- **6:00 PM - 8:00 PM in the Gym // Spring Dance:** All Miner families are welcome to celebrate our students and Miner community by coming together for an evening of fun and elegance. We are looking forward to everyone coming out with their dancing shoes and dressed to impress for an evening to remember! There will be a raffle with fun prizes for any families who have completed their enrollment in advance of the dance. RSVP and volunteer on the dedicated [Dance webpage](#).

April 17-21

- **Spring Break (School Closed)**



Reminders & Opportunities

- Sign up to be a PTO volunteer! Complete the form by [clicking here!](#)
- If you are interested in joining a PTO Committee, visit <https://www.minerelementary.org/parent-teacher-organization.html> and email minerpto@gmail.com
- If you are interested in becoming more involved in the garden/with the Green Team, visit <https://www.minerelementary.org/green-team.html> and email Ms. Ashley Luttmer at ashley.luttmer@k12.dc.gov or Ms. Emma Creamer at emma.creamer@foodcorps.org
- If you are interested in joining the Equity Team, visit <https://www.minerelementary.org/equity-team.html> and email minerequityteam@gmail.com
- If you would like more information on the Miner Mutual Aid Network, or to volunteer at/donate to an upcoming Community Table, visit <https://www.minerelementary.org/mutual-aid-network.html> and email minermutualaid@gmail.com



Thank You!

Any joys, questions, or concerns that you'd like to share?