

Miner PTO General Meeting

December 7, 2021

We are excited to once again be partnering with [Kindred](#), an organization whose mission is to support parents, staff, and school-based and educational system leaders in partnering to co-design equitable, anti-racist schools that advance collective well-being.

Agenda

6:00 - 6:05 Welcome

6:05 - 6:10 Principal's Report

6:10 - 6:15 Community School Update

6:15 - 6:35 Kindred Presentation

6:35 - 6:55 School Committee Reports

6:35 Equity Team

6:40 Miner Mutual Aid Network

6:45 Green Team

6:50 LSAT

Regular PTO Business

6:55 - 7:00 PTO President & VP Report

7:00 - 7:05 Treasurer & Teacher Representative Reports

7:05 - 7:10 PTO Committee Reports

7:10 - 7:15 Upcoming Events, Reminders, Opportunities

Open Comment: Other joys, concerns, or questions?



Welcome!

- Welcome to our December PTO General Meeting!
- Please remain on mute if you aren't speaking.
- All questions can be asked in the chat box or by using the “raise hand” button - we will do our best to answer them all but if we miss yours, please ask again or feel free to email us at minerpto@gmail.com and we will be sure to answer!
- After the meeting, please reach out to us at minerpto@gmail.com to let us know what you did/did not like about the virtual format - we would LOVE your feedback!
- Next PTO meeting date: Tuesday, January 4, at 6:00pm



Principal's Report

AP Coleman and AP Bellamy



Community School Update

Ms. Monica Woodson

<https://www.minerelementary.org/community-school.html>





UPCOMING EVENTS

DEC 7TH

PICTURE DAY

For more information, please contact Studio K at 301-262-2937; Fall Personality Pictures

DEC 15TH

TALENT SHOW FT. A Special Guest

To sign up, please send an email to Ms. Woodson at mwoodson@ebfsc.org

DEC 18TH

NBA 2K, FORTNITE Tournament

To sign up, please reach out to Ms. Woodson at mwoodson@ebfsc.org

DEC 21ST

PBIS MOVIE DAY

Please see Ms. Kirby or Ms. Joesph for more information

DEC 23RD

WINTER BREAK BEGINS

Kindred Presentation





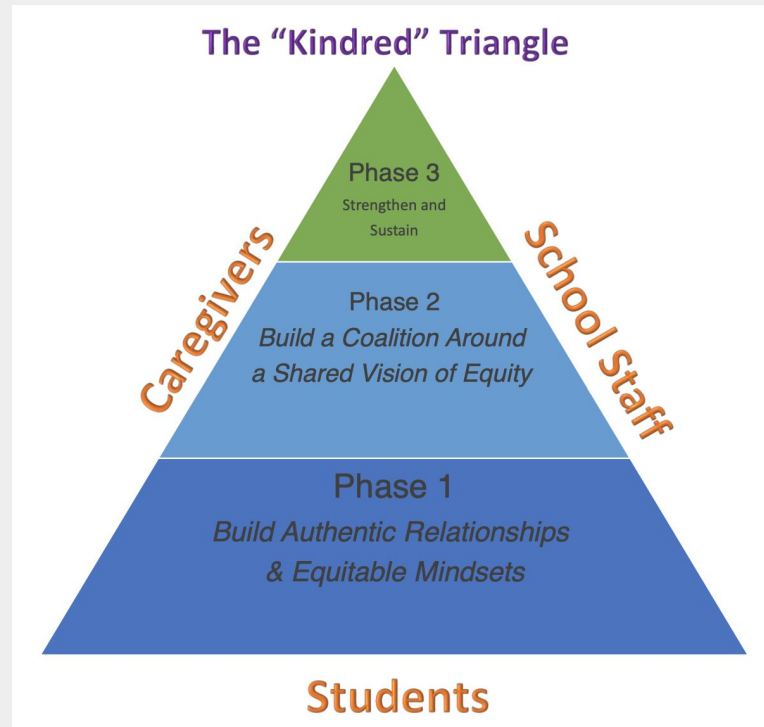
Communities collaborating towards the creation of an anti-racist and liberated society.

The Problem

**Privilege, power and politics
create immediate and
persistent barriers to access
and opportunities for
students based on their race
and socioeconomic status**

The Solution

Kindred facilitates the creation of brave spaces where community members build the mindsets, skills, and collective energy needed to root out systemic oppression



Phase I: Build Authentic Relationships & Equitable Mindsets Impact



92%

of caregivers agreed that they think about how their assumptions affect their behavior



88%

of caregivers reported taking action to advance equity in their school



86%

formed new friendships with caregivers of different backgrounds... due to their participation in a Kindred dialogue group



82%

of caregivers agreed that they feel more responsible for addressing educational inequity in their school

When asked “how likely are you to recommend participating in a dialogue group to other parents” on a scale from 1 - 10, with 10 as the highest, the average response was 9.4

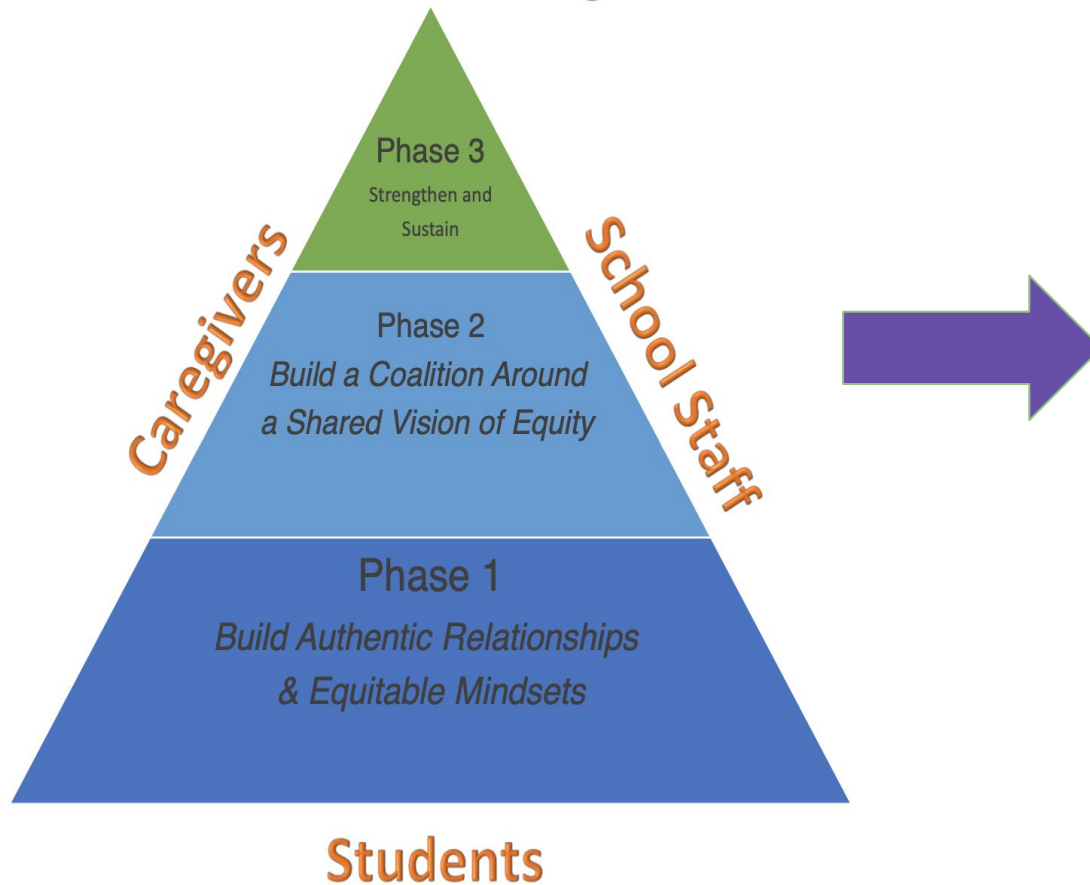


Phase 2: Build a Coalition Around a Shared Vision of Equity

- **Increased** staff of color
 - Equity Team raised concern that staff demographics did not represent the student population
 - The equity team co-designed a hiring process that **increased staff of color from 13% to 34% in one year**
- **Co-Creating a Shared Vision of Equity**
 - Formed an Equity Team to work alongside PTA to ensure equitable decision making
 - Increased the number of caregivers of color on the PTA that have decision-making authority
- **Launched** a PTA
 - Caregivers and staff advocated for and then created a parent organization that more closely aligned with their vision and needs
 - This level of caregiver leadership is a first in this community

Phase 3: Strengthen and Sustain Equitable Practices (In Process)

The “Kindred” Triangle



Long-Term Impact

- Create a sense of belonging among all school community members
- Ensure equity in the distribution of opportunities, resources, and outcomes for students
- Balance power among students, caregivers, school staff and school leadership
- Co-create a school culture of anti-racism and pursuit of liberation

The Kindred Journey



Phases with Kindred

What does it mean?

1

Build Authentic Relationships & Equitable Mindsets

Caregivers and school staff participate in DGs facilitated by Kindred



- Kindred hosts structured dialogue groups (DGs) among school staff and caregivers of diverse backgrounds
- Participants engage in safe, brave conversations about their identity, race, equity, and the goals for their children
- Participants form genuine connections and begin to build an Equity Team who will take collective action to address inequity and advance racial justice

2

Build a Coalition Around a Shared Vision of Equity

DG Alumni build a coalition of leaders rallying around a shared vision of equity



- The Equity Team utilizes the results of an equity assessment to develop an equity action plan
- Equity Team serves as space for continued identity-processing, relationship-building, and collective action to cultivate an inclusive, equitable, and anti-racist school community
- DG Alumni, new DG participants, and school leadership continue to build out the Equity Team that is committed to equity-oriented action planning and governance

3+

Strengthen and Sustain

The community takes collective responsibility for the sustainability of a more equitable and just community



- The Equity Team utilizes Kindred's Liberatory Conditions to support equity in their school. The Equity Team begins to apply the liberatory conditions as a way to prioritize the equitable distribution of opportunities, resources, and outcomes for students and families
- Caregivers, school staff and leadership SHARE an active role in driving towards greater equity within the school community
- Together all participants transform systems and power dynamics



School Committee Reports

Equity Team
Mutual Aid Network
Green Team
LSAT



Equity Team Report

Co-Facilitators: Latoya McCarthy-Scott and Amy Treat

<https://www.minerelementary.org/equity-team.html>



Join the Equity Team!

Interested in joining the team, or just learning more about it?

Membership is open to anyone in the Miner community who has an interest in increasing equity and inclusiveness in our school and our community. Team members are the heart of Miner's equity work, and are responsible for taking the lead to identify needs, develop ideas, and put plans into action.

To join:

- Email minerequityteam@gmail.com
- Come to any meeting
- Fill out this form: <https://forms.gle/BZeYZHByi4GHVrDKA>

Next meeting:TBD (be sure to sign up for the email list so you receive the Zoom link)

Tired of meetings? Our most important work occurs between meetings, so attendance at the meetings themselves is not mandatory: come to as many or as few as you like

For more information, visit the Equity Team page on Miner's website:

<https://www.minerelementary.org/equity-team.html>

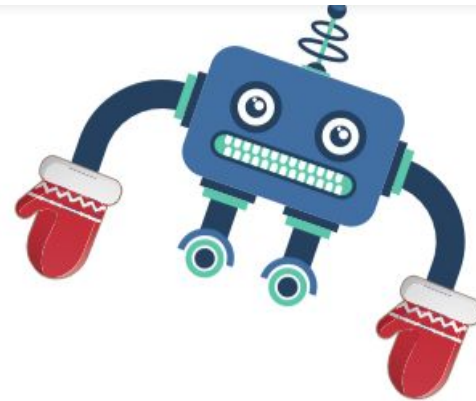


Miner Mutual Aid Network

Chris Deutsch

<https://www.minerelementary.org/mutual-aid-network.html>





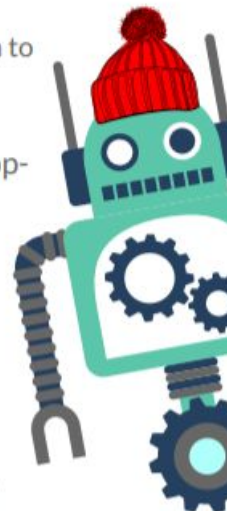
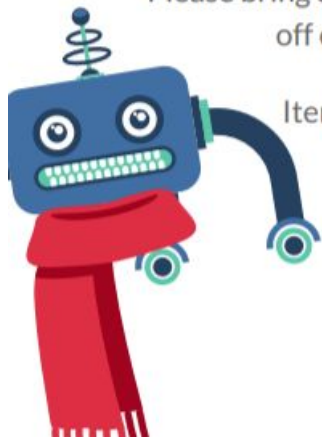
TOY & WINTER CLOTHING DRIVE

We're collecting **new** and **like-new** toys for distribution to families in our community.

Please bring donations to school beginning at drop-off on **Monday, December 13th**

Items will be distributed at the
**Miner Mutual Aid
Community Table**
December 18 | 11 AM-12 PM

Questions? Need help this season?
minermutualaid@gmail.com
(240) 621-0774



How Can I Help?

Financial and in-kind donations to support Miner Mutual Aid can be made through the Miner PTO via the [Donation page](#).

Mutual Aid goes beyond financial support. We ask every member of our community to challenge themselves to consider other ways they can be of service. This may include:

- Groceries, toiletries, medicine, cleaning supplies or other essentials
- Administrative help: legal support, social services, applying for unemployment benefits
- Transportation for individuals, or to pick up groceries and other supplies
- Childcare
- Tech Support for distance learning
- Checking in via phone calls, video chats, texting



How Can I Receive Help?

Requests for support can be made by filling out [an online Google form](#). The requests are only seen by the members of the Mutual Aid Network Team and will never be shared.

Alternatively, you can also reach out to any Miner teacher, the Community School coordinator, or Social Worker.



Green Team Report

Ms. Ashley Luttmmer, School Garden Coordinator

<https://www.minerelementary.org/green-team.html>



Winter Open House

Thanks so much to all who joined us for our Winter Open House on Saturday! Ms. Luttmer, Ms. Emma, and several students made bird feeders, drank hot apple cider, and enjoyed a gorgeous day in the garden!



LSAT Report

Co-Chairs: Mr. Jason Yoho and David Treat

Next Meeting: December 21 at 5:00pm

<https://www.minerelementary.org/lstat.html>



LSAT Updates

- Our Parent Co-Chair David Treat is moving to Vermont this month, so Allison Mitchell will take over as Co-Chair effective December 23.
- The PTO is currently holding a special election for a new LSAT Parent Representative. Any interested parent or guardian can email MinerESLSAT@gmail.com or minerpto@gmail.com for more information on the position. Nominations are due by 5pm on December 17 and can be submitted by filling out [this online form](#). The election will be held electronically December 20 - January 3, and the winner will be announced at the January PTO Meeting.
- All LSAT meetings are open to the public, and all members of the Miner community are welcome to listen in and ask questions. Exception is during closed budget deliberations in February.
- For more information on the Miner LSAT, visit <https://www.minerelementary.org/lSAT.html>



Regular PTO Business



President & VP Reports

- Volunteers of the Month!
- How to Volunteer
- Thank you to David and Amy Treat
- Special Election
- Holiday Greenery Sale
- EdFEST is December 11 (virtual) - visit <https://msdc-edfest.expoplatform.com/>
- My School DC Lottery Opens December 13 - visit <https://www.myschooldc.org/>
- Coffee with the PTO December 17
- PTO is looking for Committee Chairs and Members
- How to Connect



Congratulations to Our Volunteers of the Month!

Parent/Guardian Volunteer of the Month:

Chelsey Simonovich

- Current PreK4 Parent with an incoming PreK3 student next year
- Has been a dedicated volunteer all year, including this summer when she signed up to help water our garden, and was a great help during the Holiday Greenery Sale
- Thank you Chelsey!

Teacher/Staff Volunteers of the Month:

Ms. Hopkins, Ms. Mears, and Ms. Jackson

- Ms. Hopkins is a 1st grade educator
- Ms. Mears and Ms. Jackson are ECE educators
- They serve as our teacher coaches for DC Scores (Ms. Hopkins) and DC Junior Scores (Ms. Mears and Ms. Jackson)
- We are so grateful to them for their dedication to our students and our soccer and poetry stars!



Volunteer!

[Volunteer Sign Up Form](#)

We are so grateful to all our parent, staff, and community volunteers, but we definitely could use some more help! We know it's hard to commit to serving in a Leadership role or even on a Committee, but that doesn't mean you can't be a volunteer. The best way to help out is to complete our volunteer sign up form - when we need volunteers for an event, we will email everyone who has filled out this form. If you can do it, great! If not, there will always be more opportunities for you to help out our Mighty Miner Bears!



Join the Miner PTO Volunteer Bear Crew!

YES! I want to support my school community while building connections with other Miner Elementary parents, staff and students.

* Required

My name is: *

Your answer

I am a: *

- ☐ Parent of a Pre-K student
- ☐ Parent of a K-5 student
- ☐ Teacher/staff member
- ☐ Other: _____

Thank you David and Amy Treat

Amy has served as PTO Secretary, Equity Team Co-Facilitator, and led the Kindred Affinity Group.



David has served as PTO President, PTO Secretary, Equity Team Co-Facilitator, Green Team Parent Leader, and LSAT Co-Chair.



Special Election

- David is a Parent Representative on the LSAT, and Amy is the Secretary of the PTO. Because they are leaving, we will be holding a special election to fill their roles.
- The election will be held electronically
- If you are interested in serving as either LSAT Parent Representative or PTO Secretary, please complete the [online nomination form found here](#),
- The deadline to submit nomination forms is Friday, December 17, at 5pm.
- For more information, including position descriptions and who is eligible to run for each position, please email minerpto@gmail.com or read the information on the nomination form.

Special Election Timeline:

- Election announcement: November 23
- Nomination forms due: December 17
- Electronic ballot opens: December 20
- Electronic ballot closes: January 3
- Winners announced/terms begin: January 4 at the PTO General Meeting



Greenery Sale Success!

- Thank you to all our amazing volunteers!
- We sold all of our trees
- Some small wreaths still remain; if you would like to buy one please email minerpto@gmail.com
- We raised just over \$2,000 (less than our usual proceeds from this fundraiser, but we knew that considering we bought fewer trees this year and prices were much higher).
- Thank you to everyone who supported our sale!



PTO Committees

- Appreciation & Recognition
- Communications (Chair: John Muir)
- Community Engagement (Chair: Brandon Scott)
- Family Engagement & Events
- Fundraising & Grants

Please visit

<https://www.minerelementary.org/parent-teacher-organization.html> to learn about the role of each Committee.

Contact minerpto@gmail.com if you would like to join or even lead one of our PTO Committees!



How to Connect

- All parents, guardians, teachers, and staff are automatically members of the PTO
- To receive PTO email updates, “The Week Ahead” newsletter, and more, we encourage you to subscribe to the PTO email list by filling out this form:
<https://www.minerelementary.org/join-the-ptol.html>
- Follow us on [social media](#)
 - School social media:
 - <https://twitter.com/MinerElementary>
 - <https://www.facebook.com/MinerDCPS/>
 - <https://www.instagram.com/minerelementaryschool/>
 - PTO social media:
 - <https://twitter.com/MinerPTO>
 - <https://www.instagram.com/Miner.PTO/>
 - Other Miner social media:
 - Miner Equity Team: <https://twitter.com/EquityMiner>
 - Miner Green Team: <https://www.instagram.com/Minerelementarygarden/>
- How to share messages: email minercomms@gmail.com and specify which platforms you would like your messages shared on (schoolwide messaging, social media only, etc)
- Follow the school calendar on the [Miner homepage](#)! You can even add it to your phone’s calendar.



Treasurer Report

Abby McGill



Treasurer Report (This Period)

Cash Summary 11/09/21 - 12/07/21

Balance as of November 9, 2021:	\$ 31,054
Plus: Income (Nov 9- Dec 7, 2021):	\$ 16,885*
Less: Expenses (Nov 9- Dec 7, 2021):	\$ (19,116)
Balance as of December 7, 2021:	\$ 28,823

**Not all of the proceeds from the Greenery Sale have transferred to our bank account yet.*



Teacher Representative Report

Ms. Coles, Ms. Halley, Ms. Hayes



Committee Reports

- Appreciation & Recognition:
- Communications: John Muir
- Community Engagement: Brandon Scott
 - Ward 6 Redistricting Plan
 - <https://www.washingtonpost.com/dc-md-va/2021/12/07/dc-redistricting-ward-boundaries/>
 - <https://shoutout.wix.com/so/a6NsMX9dC?languageTag=en#/main>
- Family Engagement & Events:
- Fundraising & Grants:



Miner Spirit Store

Two ways to purchase:

- Purchase car magnets, yard signs, and t-shirts (sizes 3T - adult XXL) by emailing minerpto@gmail.com
- Visit our online spirit store at <https://www.cafepress.com/minerelementaryschoolspiritstore>



Upcoming Events, Reminders, & Opportunities



Upcoming Events (1 of 2)

Thursday, December 9

- **5:30 PM - 6:30 PM on Zoom // Open House for Incoming ECE Families (Virtual):** ECE families who are considering Miner for next school year are invited to join the administration for an in-person open house to learn more about the Miner Community.

Monday, December 13 - Friday, December 17

- **Mutual Aid Network Toy and Winter Clothing Drive:** Miner's Mutual Aid Network will be collecting new and like-new toys for distribution to families in our community. [See the announcement for full details.](#)

Monday, December 13

- **MySchoolDC Lottery opens:** New families wanting to join the Miner family apply [here](#). If you're already enrolled at Miner and wish to continue, there is no need to reapply.

Wednesday, December 15

- **6:00 PM // Staff and Student Talent Show:** Sign up to display your talents. There will also be a special guest performance! Slots are limited - to sign up email Ms. Woodson.



Upcoming Events (2 of 2)

Saturday, December 18

- **11:00 AM - 12:00 PM in the Miner Parking Lot // Miner Mutual Aid Network Community Table:** Join us for the Miner Mutual Aid Network's Community Table in the Miner parking lot. We will once again feature free food boxes, PPE, and other necessities for any member of the community in need. This month we will be distributing toys as well - [see the announcement for details](#).

Tuesday, December 21

- **5:00 PM - 6:30 PM on Zoom // LSAT Meeting:** All are welcome to observe the the Local School Advisory Team's discussions with Principal Angry. [Click here for more information about the Miner LSAT](#).

Wednesday, December 22

- **Time TBD // Winter Wonder Show:** Miner students will be performing a special holiday dance and show.

Thursday, December 23 - Friday, December 31

- **School Closed:** Winter Break. Classes resume Monday, January 3, 2022

Tuesday, January 4

- **6:00 PM - 7:00 PM on Zoom // PTO General Meeting:** Join us for the PTO's regular monthly meeting for membership to hear the latest news, developments, and plans from the PTO leadership, Principal Angry, and special guests. [Click here for more information about the Miner PTO](#).



Reminders & Opportunities

- Sign up to be a PTO volunteer! Complete the form by [clicking here!](#)
- If you are interested in joining a PTO Committee, visit <https://www.minerelementary.org/parent-teacher-organization.html> and email minerpto@gmail.com
- If you are interested in becoming more involved in the garden/with the Green Team, visit <https://www.minerelementary.org/green-team.html> and email Ms. Ashley Luttmer at ashley.luttmer@k12.dc.gov
- If you are interested in joining the Equity Team, visit <https://www.minerelementary.org/equity-team.html> and email minerequityteam@gmail.com
- If you would like more information on the Miner Mutual Aid Network, including how you can support the December Community Table, visit <https://www.minerelementary.org/mutual-aid-network.html> and email minermutualaid@gmail.com



Thank You!

Any joys, questions, or concerns that you'd like to share?